



# VEGETAL EXTRACTION LEADERSHIP

For 25 years, Laboratory Les 3 Chênes has developed its skills in vegetal extraction.

Worldwide recognized as the expert in plant extraction, 3 Chênes specialists select plants carefully to extract their quintessence.

Our expertise allow us to know perfectly:

- the exact part of plant that we should use
- if we should use dry plant or fresh plant
- the duration of extraction
- the appropriate extraction technique (Maceration, Percolation, Steam, Distillation...)
- the solvent to use (water, oil, hydroalcoholic...)

Therefore, our food supplements, cosmetics and medical device are formulated to allow a better assimilation and biodisponibility of active ingredients.

Our desire to protect the environment while respecting natural balance, our intrinsic values and our technological know-how, allow us to elaborate exclusive high-tech products.





## Pregnancy

### WHY DO YOU NEED SUPPLEMENTATION DURING PREGNANCY?

- THE FETUS DRAWS ON THE RESOURCES OF THE MOTHER
- NUTRITIONAL NEEDS INCREASE
- DEFICIENCIES IN ESSENTIAL VITAMINS, MINERALS AND NUTRIENTS
- GENERAL TIREDNESS OF THE MOTHER

## BEFORE, DURING AND AFTER PREGNANCY

From the desire of children, during pregnancy and during breastfeeding

## GOOD FETAL GROWTH AND MOTHER'S HEALTH

1

**ENHANCES THE BONE & NERVOUS DEVELOPMENT OF THE FETUS**

2

**REDUCES TIREDNESS & IMPROVES MOTHER WELL BEING**

3

**11 VITAMINS**

4

**5 MINERALS**

5

**OMEGA-3**

**1 CAPSULE PER DAY**



| Box of 30 capsules



### ADVICES FOR A HEALTHY PREGNANCY:

- DRINK AT LEAST 1,5 L OF WATER A DAY
- ADOPT A VARIED AND BALANCED DIET
- EXERCISE DAILY (WALKING, SWIMMING ...)

- ✓ COVERS ALL THE NUTRITIONAL NEEDS OF THE BABY AND THE MOM-TO-BE
- ✓ HIGHLY DOSED WITH TRACE ELEMENTS AND VITAMINS
- ✓ 30-DAYS RENEWABLE PROGRAM
- ✓ NO SIDE EFFECT

Find out our **EASY MOM** range  
"Special for pregnant women"



### FOR 1 CAPSULE:

- MAGNESIUM.....	150 MG / 40% RI*
- VITAMIN C .....	100 MG / 125% RI*
- OMEGA 3 .....	18,4 MG
- EPA.....	2,7 MG
- DHA.....	13,2 MG
- IRON .....	14 MG / 100% RI*
- VITAMIN E .....	15 MG / 125% RI*
- BETA-CAROTENE .....	2 MG
- VITAMIN B3 .....	18 MG / 113% RI*
- ZINC.....	11 MG / 110% RI*
- COPPER.....	1000 µG / 100% RI*
- VITAMIN B6.....	10 MG / 714% RI*
- VITAMIN B1 .....	1,1 MG / 100% RI*
- VITAMIN K.....	75 µG / 100% RI*
- VITAMIN B2 .....	1,4 MG / 100% RI*
- VITAMIN D3 .....	10,1 µG / 202% RI*
- VITAMIN B9 .....	400 µG / 200% RI*
- VITAMIN B12 .....	2,5 µG / 100% RI*
- IODINE .....	150 µG / 100% RI*

\*RI : Reference Intakes







## Pregnancy

PREGNANCY NAUSEA AND VOMITING ARE DUE TO THE HORMONAL CHANGE OF THE FIRST WEEKS OF PREGNANCY

→ 75% OF FUTURE MOMS ARE CONCERNED



### HOW TO PREVENT NAUSEA?

- AVOID STAYING WITH EMPTY STOMACH. EAT MORE OFTEN BUT IN SMALL QUANTITIES
- EAT IMMEDIATELY AT THE WAKE UP BEFORE TO STAND UP
- EAT PLEASANT FOODS
- AVOID STRONG ODORS SUCH AS: PERFUME, COOKING, SPICY DISHES

## PREGNANCY NAUSEA AND VOMITING

These disorders are very unpleasant for the mom-to-be and can be dangerous if nausea hinders the mom to eat or drink.

## RELEASES IMMEDIATELY NAUSEA

### GLOBAL ACTION ON:

**1 NAUSEA**  
Thanks to the extracts of ginger, sage & E.O of pepper mint and lemon balm

**2 VOMITING**  
Thanks to the ginger, lemon balm

**3 SPASMS**  
Thanks to sage

**3 DIGESTIVE DISORDERS**  
Thanks to lemon balm, caraway E.O

**QUICK RELIEF**  
1 tablet only



| Box of 15 tablets

- ✓ RELEASES FROM THE 1ST TAKE
- ✓ NATURAL FORMULA
- ✓ NO SIDE EFFECTS
- ✓ SAFE FOR MOM AND BABY

Find out our **EASY MOM** range  
"Special for pregnant women"



### FOR 1 TABLET:

- GINGER EXTRACT ..... 75 MG  
I.E PLANT EQUIVALENT ..... 750 MG  
- SAGE ..... 50 MG  
- LEMON BALM ..... 50 MG







## Pregnancy

### WHY DO PREGNANT WOMEN HAVE MORE CRAMPS?

- THEY SUFFER FROM VENOUS INSUFFICIENCY
- POOR CIRCULATION OF BLOOD IN THE MUSCLES
- WEIGHT GAIN AND DECREASE OF THE PHYSICAL ACTIVITY
- MAGNESIUM DEFICIENCY



### TIPS TO AVOID CRAMPS:

- STRETCH IN THE EVENING, BEFORE GOING TO BED
- AVOID STANDING TOO LONG
- EAT CALCIUM-RICH FOODS AND DRINK A LOT OF WATER
- AVOID CARBONATED DRINKS THAT
- CONTAIN A LOT OF PHOSPHORUS

## PAINFUL PREGNANCY CRAMPS

*They appear mainly at night in the thighs and calves*

## RELIEVES QUICKLY YOUR CRAMPS

### 3 ACTIONS

**1 RELAXES YOUR MUSCLES**  
By regulating nervous influx

**2 FILLS THE MINERAL DEFICIENCIES**  
Calcium, Potassium, Magnesium

**3 AVOIDS MUSCULAR TIREDNESS**

**1 TABLET  
PER DAY**



| Box of 30 tablets

- ✓ RELIEVES FROM THE 1<sup>ST</sup> TAKE
- ✓ NATURAL FORMULA
- ✓ NO SIDE EFFECTS

*Find out our **EASY MOM** range  
"Special for pregnant women"*



**PREVENTIVE  
& CURATIVE**

**ACTS  
QUICKLY**

### FOR 1 TABLET:

- CALCIUM .....	142 MG .....	17,8% RI*
- POTASSIUM .....	80 MG .....	4% RI*
- MAGNESIUM.....	57,1 MG .....	15,2% RI*
- IRON .....	2,1 MG .....	15% RI*
- SELENIUM .....	50 µG .....	91% RI*

\*RI: Reference intakes





## Pregnancy

### WHAT HAPPEN AFTER THE CHILDBIRTH ?

- DROP IN HORMONE LEVELS
- CRYING, FEARS, DOUBTS
- EXHAUSTION AND IRRITABILITY
- DEPRESSION AND ENERGY LOSS

## STRESS, TIREDNESS, IRRITABILITY

100% of moms are concerned

## FIND AGAIN THE PLEASURE OF BEING MOM

1 **IMPROVES SLEEP AND MOOD**

2 **PHYSICAL AND MENTAL WELL-BEING**

3 **REDUCED IRRITABILITY, NERVOUS FATIGUE AND EMOTIONAL SENSITIVITY**

**ONLY 1 TABLET PER DAY**



| Box of 30 tablets



### RECOMMENDATIONS :

- FOLLOW THE PROGRAM DURING AT LEAST 30 DAYS
- TAKE CARE OF YOU : SLEEP, TAKE A BATH, EAT WHAT YOU WANT...
- MAKE ACTIVITIES WITH YOUR BABY : A WALK, SKIN-TO-SKIN...
- GET HELP FROM YOUR FAMILY & FRIENDS FOR DAILY TASKS

- ✓ MENTAL ET PHYSICAL WELL-BEING
- ✓ QUICK EFFECTS, REINFORCED DAY AFTER DAY
- ✓ COMPATIBLE WITH BREASTFEEDING
- ✓ NO SIDE EFFECT, NO ADDICTION

**ACTS QUICKLY**



### INTAKES FOR 1 TABLET:

- MAGNESIUM..... 300 MG / 80% RI\*
- TRYPTOPHAN ..... 75 MG
- VITAMIN B6.....2 MG / 143% RI\*

\*RI: Reference intakes





## Hair Loss

### WHY DO WE LOSE HAIR AFTER DELIVERY?

- HORMONAL DISRUPTION: REDUCTION OF OESTROGEN HORMONES. HAIR FALL SUDDENLY INSTEAD OF FALLING "NATURALLY" ALL OVER THE PREGNANCY
- FATIGUE AND POSTPARTUM STRESS
- IRON DEFICIENCY

## HAIR LOSS, ALOPECIA

Concern 80% of young moms. Hair loss appears in the first 4 months after delivery.

## NO MORE HAIR LOSS!

### 4 ACTIONS

#### 1 PREVENTS HAIR LOSS

#### 2 ACTIVATES THE MICROCIRCULATION OF THE SCALP

#### 3 REINFORCES THE BULB AND HAIR CORTEX

#### 4 STIMULATES HAIR GROWTH

1 TABLET  
PER DAY



| Box of 30 tablets



### TO PREVENT HAIR LOSS:

- TAKE EASY MOM HAIR LOSS RIGHT AFTER DELIVERY.
- GENTLY MASSAGE YOUR SCALP DURING SHAMPOO TO ENHANCE THE MICROCIRCULATION
- USE A MILD SHAMPOO
- AVOID USING HAIR DRYER OR STRAIGHTENER
- AVOID TO TIE YOUR HAIR

✓ NATURAL FORMULA

✓ RESULTS FROM THE 1<sup>ST</sup> BOX

✓ NO SIDE EFFECTS

Find out our **EASY MOM** range  
"Special for pregnant women"



PREVENTIVE  
& CURATIVE

ACTS  
QUICKLY

#### FOR 1 TABLET:

- KERATIN .....	200 MG	
- CYSTEINE .....	125 MG	
- METHIONINE .....	125 MG	
- ROCKET EXTRACT .....	100 MG	
- BLUEBERRY EXTRACT .....	100 MG	
- VITAMIN B3 .....	2.4 MG	15% RI*
- VITAMIN B6 .....	0.21 MG	15% RI*
- VITAMIN B8 .....	7.5 µG	15% RI*
- IRON .....	2.1 MG	15% RI*

\*RI: Reference intakes





## Children Digestive comfort

**BABIES CAN BE PRETTY GASSY. IT'S COMMON FOR THEM TO PASS GAS 13-21 TIMES EACH DAY! WHY SO MUCH? INFANTS HAVE PLENTY OF CHANCES TO SWALLOW AIR, LIKE WHEN THEY:**

- ➔ EAT, WHETHER FOOD COMES FROM A BREAST OR BOTTLE
- ➔ SUCK A PACIFIER
- ➔ CRY

# DIGESTIVE DISORDERS

*EASY GAZ® helps to absorb Intestinal Gases and improves Digestive Comfort.*

## GASES REDUCER

### 4 ACTIONS:

**1 GAS ABSORPTION**

**2 ANTI-SPASMODIC**

**3 EASE DIGESTION**

**4 EVACUATION OF BILE**

PREBIOTIC FIBERS  
INSIDE

GLUTEN FREE



1 Dropper - 30 mL



### HOW TO HELP YOUR BABY FEEL BETTER ?

**TRY THESE STEPS TO PREVENT AND EASE THE PAIN OF GAS:**

- ➔ CHECK FEEDING POSITION
- ➔ BURP YOUR BABY
- ➔ CHANGE FEEDING EQUIPMENT
- ➔ GENTLY MASSAGE

✓ NATURAL ACTIVE INGREDIENTS

✓ PREBIOTIC FIBERS

✓ PLANT EXTRACTS

✓ EXTRA CARAMEL TASTE



### INTAKES FOR 20 DROPS

- FENNEL EXTRACT .....	0,076 G
- CHAMOMILE EXTRACT .....	0,076 G
- CARAWAY EXTRACT .....	0,057 G
- LEMON BALM EXTRACT .....	0,057 G





## Detox

IF YOU ARE STRUGGLING WITH EXCESS WEIGHT AND FATIGUE, PLUS A VERY SLUGGISH METABOLISM, THE BEST THING TO DO IS A DETOXIFICATION DIET.

TOXINS NOT ONLY INCREASE YOUR RISK OF CANCER, THEY ALSO SLOW DOWN YOUR METABOLISM, CAUSE SKIN RASHES AND ALLERGIES.

TODAY'S WORLD IS FULL OF TOXINS. THEY ARE IN YOUR SOIL, PACKAGING, HOME, WATER, AIR, FOOD, PERFUME, DEODORANT AND ALL SORTS OF OTHER ITEMS.

## NEW GENERATION DRAINER

13 times more concentrated than a classic drainer, DETOXLIM ULTRASVELT is an ultra-dosed complex, whose goal is to reshape the silhouette. It permits to easily eliminate fats and water excess.

## BECOME SLENDER & TONED

### OVERALL ACTIONS

1 INTENSE FAT BURNER

2 ELIMINATES WATER EXCESS

3 SCULPTS AND REFINES

4 DETOXIFIES YOUR BODY

5 PROVIDES ENERGY

DELICIOUS PEACH/  
ORANGE FLAVOUR



13 TIMES MORE  
CONCENTRATED



| Box of 15 packets



### HEALTH BENEFITS OF DETOXING YOUR BODY

- ➔ ELIMINATE TOXINS FROM FOODS, BEVERAGES AND HYGIENE PRODUCTS
- ➔ INCREASE ENERGY THROUGHOUT THE DAY
- ➔ CONTROL CRAVINGS
- ➔ CURB FOOD ADDICTION
- ➔ MANAGE STRESS
- ➔ LOSE WEIGHT

✓ 20 ACTIVE INGREDIENTS

✓ POWERFUL AND EFFICIENT

✓ EASY TO USE

✓ 15 DAYS PROGRAM



| 6 units display

### FOR 1 PACKET

- L-CARNITINE .....	1364 MG
- INULIN .....	1708 MG
- TAURINE .....	493 MG
- CHOLINE .....	200 MG
- L-TYROSINE .....	500 MG
- TOTAL CAFFEINE .....	194 MG
- GREEN TEA EXTRACT .....	445 MG
- GUGGUL EXTRACT .....	200 MG
- DANDELION EXTRACT .....	125 MG
- GRAPE SEED EXTRACT .....	100 MG
- GREEN COFFEE EXTRACT .....	100 MG
- BEARBERRY .....	50 MG
- JUNIPER EXTRACT .....	50 MG
- GARCINIA EXTRACT .....	50 MG
- CALCIUM .....	40 MG / 5 % RI*
- VITAMIN C .....	180 MG / 225 % RI*
- VITAMIN B1 .....	3.7 MG / 336 % RI*
- VITAMIN B3 .....	53.9 MG / 337 % RI*
- VITAMIN B6 .....	2 MG / 143 % RI*
- VITAMIN B12 .....	3 µG / 120 % RI*

\*RI: Reference Intakes





## Detox

A LOT OF THINGS CAN INTOXICATES YOUR BODY

AND PREVENT IT FOR FUNCTIONING PROPERLY :

- ALCOHOL
- CAFFEINE
- FAT
- TOBACCO
- POLLUTION
- STRESS
- LACK OF SLEEP



A DETOXIFICATION CURE CONSISTS IN PURIFYING THE BODY BY CLEARING IT OF THE TOXINS THAT HAVE ACCUMULATED, IN ORDER TO RESTORE ITS NATURAL BALANCE. IT SHOULD BE DONE IN CASE OF:

- SEASON CHANGE
- WEIGHT GAIN
- LOW ENERGY

## EXCESS WEIGHT AND WATER RETENTION

Give your body a boost and help it get rid of these by doing a detoxification cure.

# SLIMMING BECOMES A PLEASURE

1 DETOXIFICATION

2 DIURETIC

3 FAT BURNING

4 FLAT STOMACH

5 EASES DIGESTION

6 ANTIOXIDANT



| Weight loss

| Fat burning


| Vegan

- ✓ BASED ON PLANT EXTRACTS
- ✓ NATURAL EFFICIENCY
- ✓ TARGETED ACTION
- ✓ EXTRA TASTE
- ✓ EASY TO USE




PER 50 ML	
TAMARIND EXTRACT.....	11 400 MG
EXTRACT OF BURDOCK.....	10 000 MG
DANDELION EXTRACT.....	3 000 MG
CONCENTRATED PINEAPPLE JUICE.....	3 000 MG
NUTRIOSE.....	2 140 MG
LE IN FIBERS.....	1 500 MG
EXTRACT OF NETTLE.....	2 000 MG
BIRCH EXTRACT.....	2 000 MG
CONCENTRATED APPLE JUICE.....	2 000 MG
EXTRACT OF ASPARAGUS.....	1 000 MG
SPIRULINA EXTRACT.....	1 000 MG
BEETROOT PUREE.....	500 MG
SPINACH.....	200 MG
EXTRACT OF PARSLEY.....	200 MG
ARTICHOK EXTRACT.....	100 MG
VITAMIN C.....	12 MG / 15% OF RI*

\*RI : REFERENCES INTAKES



PER 20 ML	
GUARANINE.....	4 500 MG
CAPSAICINE.....	2,25 MG
PEPPER EXTRACT.....	2,25 MG
THEOBROMINE & THEOPHILINE.....	2 250 MG
GREEN TEA EXTRACT.....	2 250 MG
PHENOLIC ACIDS.....	2 250 MG
ELBERRY EXTRACT.....	2 250 MG
POLYPHENOLS.....	4 300 MG
POTASSIUM NITRATES.....	2 400 MG
CHERRY STEM EXTRACT.....	2 400 MG
L-CARNITINE.....	100 MG
CAFFEINE.....	35,87 MG
VITAMIN C.....	12 MG



PER 20 ML	
BLACKCURRANT EXTRACT.....	2700 MG
KOLA EXTRACT.....	2700 MG
ASH EXTRACT.....	2700 MG
ELDERBERRY EXTRACT.....	2700 MG
GREEN TEA EXTRACT.....	2700 MG
L-CARNITINE.....	666.7 MG
TOTAL CAFFEINE.....	43.7 MG







## Weight loss

**WHY DIETS NEVER WORK ?**  
**AS YOU EAT LESS, YOU SLOWLY LOOSE WEIGHT BY**  
**EMPTYING 'WHITE' FAT CELLS.**  
**BUT IN FACT 'WHITE' FAT CELLS ARE NOT DEFINITELY**  
**REMOVED.**  
**WHEN YOU GET BACK TO YOUR PREVIOUS FOOD**  
**HABITS, 'WHITE' FAT CELLS ARE ONCE MORE REFILLED.**  
**THIS IS THE YOYO EFFECT : REGAINING ALL THE**  
**WEIGHT YOU HAVE LOST AND SOMETIME EVEN MORE!**



## HOW IT WORKS :

THANKS TO EXCLUSIVE INGREDIENTS :

MINCINOV® TURNS WHITE FAT CELLS INTO BROWN ONES.

BECOMING BROWN, FAT CELLS ARE DEFINETLY BURNED.

EMBEDDED FAT IS DESTROYED SUSTAINABLY.

NO MORE YOYO EFFECT !

## EXCESS WEIGHT, YOYO EFFECT

*Tired of ineffective diets? Transform and burn your fat efficiently.*

## THE YOYO EFFECT KILLER

### OVERALL ACTIONS:

**1 TRANSFORMS FATS**

**2 DEGRADES INSTALLED FAT**

**3 CAPTURES FATS & SUGARS**

**4 DECREASES APPETITE**

**5 LOOSES WEIGHT**

**CLINICALLY  
PROVEN**



Box of 60 tablets  
 EAN: 3525722019989

- ✓ FROM THE LATEST SCIENTIFIC DISCOVERY
- ✓ RAPID AND LASTING WEIGHT LOSS
- ✓ UNIQUE MECHANISM OF ACTION
- ✓ TURNS WHITE FATS INTO BROWN FATS

**TESTED  
EFFICIENCY**



### FOR 4 TABLETS

- ROSEMARY EXTRACT .....	900 MG
- CALCIUM .....	120 MG / 15% RI*
- NOPAL .....	200 MG
- BLACK MUSTARD .....	200 MG
- SWEET MINT .....	200 MG
- CLOVE EXTRACT .....	100 MG
- BITTER ORANGE EXTRACT .....	100 MG
- PASSIONFLOWER EXTRACT .....	100 MG
- CARNITINE .....	68,2 MG
- CHILLI EXTRACT .....	22,5 MG
- VITAMIN B1 .....	0,165 MG / 15% RI*
- VITAMIN B2 .....	0,21 MG / 15% RI*
- VITAMIN B3 .....	2,4 MG / 15% RI*
- VITAMIN B5 .....	0,9 MG / 15% RI*
- VITAMIN B6 .....	0,21 MG / 15% RI*
- VITAMIN B8 .....	7,5 µG / 15% RI*
- VITAMIN B12 .....	0,375 µG / 15% RI*

RI\* : REFERENCE INTAKES





Swollen belly

IT CAN BE DUE TO :

- POOR DIGESTION
- PATHOGENIC FLORA
- FERMENTATION AND GAS
- UNHEALTHY DIET
- FAT EXCESS

## BLOATING, BELLY FAT

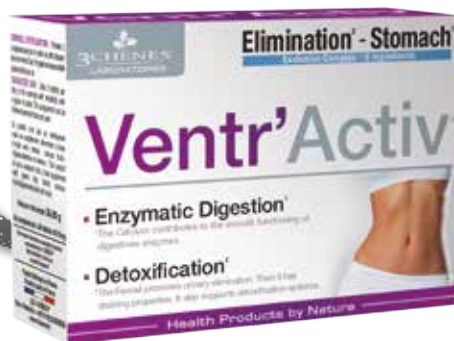
*A flat stomach is a matter of aesthetic but above all of intestinal well-being.*

## A BEAUTIFUL FLAT STOMACH

- 1 **STIMULATES DIGESTIVE ENZYME**
- 2 **HELPS BIFIDOGENIC FLORA GROWTH**
- 3 **REDUCES GAS, DETOXIFIES**
- 4 **REDUCES GLUCOSE ABSORPTION**
- 5 **PROMOTES FAT BURNING**

DIGESTION &  
SLIMMING

AMONG SLIMMING  
BEST-SELLERS



Box of 60 tablets



TO HAVE A FLAT STOMACH :

- EAT ENOUGH FIBERS
- MAKE SMALLER MEALS
- AVOID FOOD UNEASY TO DIGEST
- EXERCISE REGULARLY
- AVOID SMOKING
- AVOID CHEWING GUM

- ✓ FAST & EFFECTIVE
- ✓ 5 INGREDIENTS
- ✓ DIGESTIVE ACTION
- ✓ SLIMMING ACTION
- ✓ 1 MONTH PROGRAM



DISPLAY DELIVERED FULL  
ACL : 2622148

MILLIONS BOXES  
SOLD

PER 2 TABLETS :

- GREEN CLAY ..... 20MG
- FENNEL ..... 100MG
- FRUCTO-OLIGOSACCHARIDES ..... 100MG
- INULIN ..... 100MG
- CALCIUM ..... 120MG / 15% RI\*

\*RI : REFERENCE INTAKES





## Water retention

**WATER RETENTION IS A LIQUID EXCESS IN THE BODY.**

**IT CHANGES THE SHAPE IN A NON-ESTHETIC WAY :**

- ➔ NODS OF FAT
- ➔ UNSIGHTLY LEGS
- ➔ SWOLLEN ANKLES
- ➔ CONGESTED TISSUE

WATER RETENTION CAN ALSO LEAD TO A HIGH BLOOD PRESSURE.

## HEAVY LEGS, SWOLLEN ANKLES

*These issues can easily be avoided thanks to our plant based food supplement.*

# SHAPE YOUR SILHOUETTE

**1 DIURETIC & DRAINING**

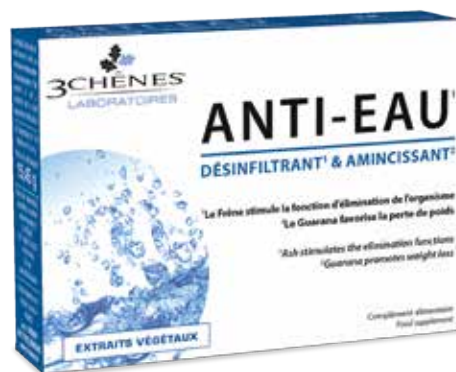
**2 ANTI-INFLAMMATORY**

**3 DETOXIFYING**

**4 FAT BURNER**

**5 INTESTINAL WELL-BEING**

**DRAINING & SLIMMING**



Box of 30 tablets  
EAN : 3-52572-000213-6



**3CHÈNES**  
LABORATOIRES

Document only for presentation to the professional by one 3 CHÈNES representative having received training, cannot be used for any other purpose.

[www.3chenes.com](http://www.3chenes.com)



## SOME ADVICES TO HELP :

- ➔ LOSING WEIGHT (IF YOU'RE OVERWEIGHT)
- ➔ PRACTISING SPORTS, SUCH AS WALKING, SWIMMING OR CYCLING
- ➔ RAISING YOUR LEGS FOUR TIMES A DAY TO IMPROVE YOUR CIRCULATION
- ➔ AVOIDING STANDING FOR TOO LONG
- ➔ AVOIDING SALTY FOODS

- ✓ REMOVES EXCESS WATER
- ✓ CONTRIBUTES TO WEIGHT LOSS
- ✓ RESHAPES THE SILHOUETTE
- ✓ ACTS ON LIVER, KIDNEYS AND GALL BLADDER
- ✓ CONTAINS 6 VEGETAL EXTRACTS



| DISPLAY

**15 DAYS PROGRAM**

### PER 2 TABLETS:

- MEADOWSWEET EXTRACT .....	100 MG
I.E PLANTS .....	100 MG
- HEATHER EXTRACT .....	100 MG
I.E PLANTS .....	400 MG
- ASH EXTRACT .....	80 MG
I.E PLANTS .....	320 MG
- ARTICHOKE .....	80 MG
- GUARANA EXTRACT .....	20 MG
I.E PLANTS .....	40 MG
- BLACK RADISH EXTRACT .....	20 MG
I.E PLANTS .....	80 MG

**3CHÈNES**  
LABORATOIRES

Document only for presentation to the professional by one 3 CHÈNES representative having received training, cannot be used for any other purpose.

[www.3chenes.com](http://www.3chenes.com)







## Food excess

**A FEW POUNDS CAN SETTLE YOUR HIPS, BECAUSE OF :**

- IMBALANCED NUTRITION
- EATING ON THE GO
- FOOD EXCESS
- SEDENTARY LIFE...

## EXTRA POUNDS, SADDLEBAGS

*What if you have only 3 days to erase your food excess ?*

# 3 DAYS TO FIT IN YOUR JEANS!

**1 WEIGHT LOSS UP TO -1,9 KG**

**2 WAIST SIZE REDUCTION UP TO -4,1 CM**

**3 FOOD EXCESS ERASER 86%**

**4 NO HUNGER 91%**

**5 NO TIREDNESS FOR 91%**



3 Days programme : Morning + midday + evening tablets and unicadoses of drinkable solution



## WHEN TO USE 3 DAYS EXPRESS ?

- BEFORE OR AFTER FOOD EXCESS
- BEFORE OR AFTER A PARTY
- AFTER CHRISTMAS
- BEFORE SUMMER, TO PREPARE YOUR BODY
- TO HELP YOU START A DIET
- WHENEVER YOU NEED TO LOOSE WEIGHT QUICKLY !

- ✓ EASY AND BALANCED PROGRAMME
- ✓ QUICK, COMPLETE & EFFICIENT
- ✓ NO HUNGER FEELING, NO YOYO EFFECT
- ✓ ONLY 3 DAYS TO GET RESULTS
- ✓ CLINICALLY PROVEN EFFICIENCY

**MILLIONS of boxes SOLD**



### 2 MORNING TABLETS :

- GUARANA EXTRACT ..... 480 MG
- CALCIUM ..... 372,4 MG / 47% RI\*
- WRACK ..... 200 MG
- VITAMIN C ..... 60 MG / 75% RI\*

### 2 NOON TABLETS :

- SPIRULINA ..... 100 MG
- APPLE PECTIN ..... 100 MG
- FENNEL EXTRACT ..... 100 MG
- GENTIAN EXTRACT ..... 100 MG
- CHERRY PEDUNCLE EXTRACT ..... 100 MG
- ARTICHOKE ..... 100 MG

### 2 EVENING TABLETS :

- GREEN TEA EXTRACT ..... 416 MG
- SEA FENNEL ..... 250 MG
- ELDER EXTRACT ..... 250 MG
- CARNITINE ..... 123 MG

### 1 UNICADOSE :

- DANDELION EXTRACT ..... 2000 MG
- NETTLE EXTRACT ..... 2000 MG
- GREEN TEA EXTRACT ..... 1500 MG
- GUARANA EXTRACT ..... 1500 MG
- OAT BRAN EXTRACT ..... 600 MG
- RED GRAPE EXTRACT ..... 400 MG

RI\* : REFERENCE INTAKES





## Excess weight

### EXCESS WEIGHT INCREASE THE RISK OF :

- HEART DISEASE
- STROKES
- DIABETES
- CANCER
- DEPRESSION

## EXCESS WEIGHT, OBESITY

Weight gain increase the risk of developing major health problems.  
804 Program will help you to loose your kilos lastingly.

# N°1 SLIMMING PROGRAM

20 YEARS  
OF SUCCES

CLINICALLY  
- 4kg  
in  
8 DAYS  
PROVEN

- 1 **REGULATES FAT AND SUGAR METABOLISM**
- 2 **EASES DIGESTION AND ELIMINATION**
- 3 **STRENGTHENS VENOUS SYSTEM**
- 4 **ANTI-FATIGUE, NO DEFICIENCY, EMOTIONAL BALANCE**



## 804 IS A COMPLETE NUTRITIONAL PROGRAM

- 8 DAYS
- 0 FATIGUE
- 4 SLIMMING ACTIONS

### ✓ COMPLETE PROGRAM

### ✓ CLINICALLY PROVEN<sup>1</sup>

Slimming effect for 100%  
Waist circumference loss for 95%  
Appetite suppressant for 95%  
100% would recommend it

### ✓ PHARMACY LEADER

Pack starter :  
drinkable solution + day and night  
tablets



SOUP  
- ONIONS  
- TOMATO  
- GREEN CABBAGE

- RED PEPPER  
- CELERY...



#### DAY TABLET

- VITAMIN C ..... 120 MG / 150% RI\*  
- GUARANA EXTRACT ..... 100 MG OR 12 MG OF CAFFEINE  
- MATE EXTRACT ..... 75 MG OR 3,75 MG OF CAFFEINE  
- MEADOWSWEET EXTRACT ..... 75 MG  
- FRUCTO-OLIGOSACCHARIDES ..... 75 MG

#### NIGHT TABLET

- LINDEN EXTRACT ..... 80 MG  
- VERBENA EXTRACT ..... 80 MG  
- GREEN TEA EXTRACT ..... 80 MG  
- POLYPHENOLS ..... 40 MG  
- CATECHINS ..... 28 MG  
- EGCG ..... 12,8 MG  
- FENNEL EXTRACT ..... 80 MG  
- MAGNESIUM ..... 16 MG / 4.2% RI\*  
- VITAMIN B6 ..... 2 MG / 142% RI\*

\* RI: Reference Intakes

<sup>1</sup>DermScan study 12/06 made during 8 days with 21 volunteers suffering from weight excess. Volunteers have strictly followed the food diet detailed in the slimming guide and have eaten the 804<sup>®</sup> Diet Soup

Pack 804 slimming :  
drinkable solution + day and night  
tablets + soup



#### DRINKABLE SOLUTION - PER 20ML

- OAT BRAN EXTRACT ..... 3500 MG  
- GREEN TEA EXTRACT ..... 3000 MG  
- CRANBERRY EXTRACT ..... 2000 MG  
- LEMON EXTRACT ..... 1100 MG  
- INULIN ..... 1000 MG  
- RED VINE EXTRACT ..... 800 MG  
- BURDOCK EXTRACT ..... 400 MG  
- PINEAPPLE EXTRACT ..... 400 MG  
- BACH FLOWER WALNUT ..... 6 MG  
- ESSENTIAL OILS OF ROSEMARY AND JUNIPER ..... 0.4 MG



#### BOOSTER - PER 40 ML

- AQUEOUS EXTRACTS OF BLACKCURRANT, ASH, COLA, ELDERBERRY, GREEN TEA ..... 30 G  
- PLANT EQUIVALENT FOR EACH ..... 600MG  
- ACEROLA EXTRACT ..... 576 MG  
- INCLUDING VITAMIN C ..... 120 MG / 150% RI\*  
- L-CARNITINE ..... 200 MG  
- VITAMIN B6 ..... 2 MG / 143% RI\*  
- VITAMIN B1 ..... 1,3 MG / 118% RI\*  
- VITAMIN B12 ..... 1 µg / 40% RI\*



#### SLIMMING AID - FOR 2 TABLETS

- ACACIA GUM FIBER ..... 200 MG  
- LEMON PECTIN ..... 160 MG  
- GREEN COFFEE EXTRACT ..... 80 MG  
- COLA EXTRACT ..... 80 MG





## Cellulite

### FACTORS INFLUENCING CELLULITE APPARITION:

- HEREDITY
- FEMALE HORMONES
- POOR DIET
- LACK OF EXERCISE
- POOR BLOOD CIRCULATION

## CELLULITE, LACK OF FIRMNESS

There are many women caring for their appearance. Their well-being is linked to the feeling of looking beautiful everyday.

# STOP CELLULITE!

CLINICALLY  
PROVEN

STIMULATES  
LIPOLYSIS



200ml tube  
EAN : 3525722017268

- 1 **REDUCES CELLULITE 90%**
- 2 **DESIGNS BODY LINE 96%**
- 3 **FIRMED AND REFRESHED BODY 100%**



### ADVICES :

- APPLY PUSH UP CREAM TWICE A DAY, USING CIRCULAR MOTIONS IN STUBBORN AREAS.

### FOR MORE RESULTS :

- MAKE TARGETED EXERCISE
- PRACTICE CARDIO EXERCISE
- AVOID FATTY AND SALTY FOOD

- ✓ PROVEN EFFECTIVENESS
- ✓ MULTI-ACTION CREAM
- ✓ DERMATOLOGICALLY TESTED
- ✓ PARABEN FREE



TESTED  
EFFICIENCY

HYDRATION & SKIN  
PROTECTION

### COMPOSITION :

- CAFFEINE
- BUPLEURUM FALCATUM
- BEES WAX







## Flat chest

**A FLAT CHEST :**  
**DIFFERENT THINGS CAN DAMAGE THE CHEST AND**  
**MAKE IT LOOK LESS BEAUTIFUL :**

- PREGNANCY
- AGEING
- SUN EXPOSURE
- REPEATED DIETS
- VIOLENTS SPORTS

## FLAT CHEST, STRETCH MARKS

*Breast is a symbol of femininity, care is needed to keep it toned and firm.*

## BREAST DENSIFIER

**CLINICALLY  
PROVEN**

**HYDRATION  
& SKIN  
PROTECTION**

**1 FAVORISES COLLAGEN  
SYNTHESIS 350%**

**2 DECREASES STRETCH  
MARKS 72%**

**3 INCREASES FIRMNESS**

**4 TONES THE SKIN**



200ml tube  
 EAN : 3525722017251



### ADVICES :

TISSUE OF THE BUST TEND TO RELAX WITH TIME,  
 ESPECIALLY BECAUSE IT DOESN'T CONTAIN MUSCLES.  
 DRIED SKIN, LACK OF ELASTICITY AND STRETCH MARKS  
 CAN ALSO DIMINISH THE BEAUTY OF THIS AREA.  
 APPLY PUSH UP BUST GEL FROM THE BASE OF THE BREAST  
 TO THE CHIN, WITH GENTLE CIRCULAR MOVEMENTS,  
 PREFERABLY BEFORE BEDTIME.

- ✓ PROVEN EFFECTIVENESS
- ✓ MULTI-ACTION CREAM
- ✓ DERMATOLOGICALLY TESTED
- ✓ PARABEN FREE



**TESTED  
EFFICIENCY**

**SCULPTS  
AND TONES**

### COMPOSITION :

- BIO-BUSTYL
- REGESTRIL
- CREATINE
- COCOA BUTTER
- SHEA BUTTER





## Tonus & Immunity

ON THE WHOLE, YOUR IMMUNE SYSTEM DOES A REMARKABLE JOB OF DEFENDING YOU AGAINST DISEASE CAUSED BY MICROORGANISMS.

BUT SOMETIMES IT FAILS: A GERM INVADES SUCCESSFULLY AND MAKES YOU SICK. WHAT IF YOU HELP YOUR ORGANISM DEFENSES WITH A FOOD SUPPLEMENT SYRUP ?

## LOW IMMUNE SYSTEM

*LIMUNIT is the result of a careful selection of powerful natural active ingredients, for a complete action on immunity.*

## TONUS AND IMMUNITY BOOSTER

REINFORCES  
NATURAL DEFENSES



1 RESISTANCE

2 IMMUNOSTIMULANT

3 ANTI-SEPTIC

4 ANTI-INFLAMMATORY

5 ANTI-ASTHENIC

6 ANTIOXIDANT



1 Flask of 125 mL



## SIMPLE AND NATURAL WAYS TO BOOST YOUR IMMUNE SYSTEM :

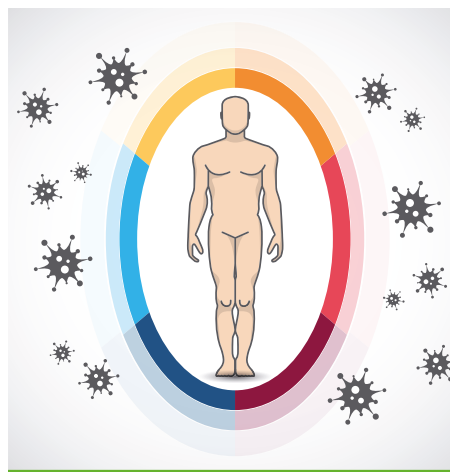
- GET ENOUGH SLEEP AND MANAGE STRESS
- AVOID TOBACCO
- EAT VEGETABLES, FRUITS, NUTS & SEEDS
- CATCH SOME RAYS (15 MIN PER DAY)
- EXERCISE REGULARLY

✓ NATURAL ACTIVE INGREDIENTS

✓ PLANT EXTRACTS AND MINERALS

✓ HIGHLY DOSED FORMULA

✓ FOR THE WHOLE FAMILY



### INTAKES FOR 20 ML

- ELEUTHEROCOCCUS EXTRACT .....	6 000 MG
- ROSEHIP EXTRACT .....	1 000 MG
- ECHINACEA EXTRACT .....	400 MG
- PROPOLIS EXTRACT .....	250 MG
- ACEROLA EXTRACT .....	115.20 MG
I.E. VITAMIN C .....	24 MG
- MANGANESE .....	0.3 MG
- COPPER .....	0.3 MG





## Tonus & Immunity

EVER WONDER WHY SOME PEOPLE, MAYBE YOURSELF INCLUDED, GET SICK MORE THAN OTHERS?

THE ANSWER MAY LINKED TO THE FACT THAT MANY PEOPLE HAVE DECREASED THEIR ABILITY TO FIGHT GERMS AND VIRUSES LEADING TO AILMENTS AS COLDS, FLU, CERTAIN DISEASES WHICH DISTURBS YOUR WELL-BEING.

# FATIGUE, ALLERGY, LACK OF TONUS

## IMMUNITY BOOSTER

### 4 ACTIONS:

- 1 REVITALIZES INTELLECTUAL CAPACITIES
- 2 ENERGIZES YOUR BODY
- 3 STIMULATES METABOLISM
- 4 BALANCES THE IMMUNE RESPONSE

NATURAL SOURCE OF AMINO-ACIDS



1 Flask of 125 mL



ROYAL JELLY IS A GIFT OF NATURE SECRETED BY BEES.

ROYAL JELLY IS FULL OF :

- AMINO-ACIDS
- VITAMINS
- MINERALS
- TRACE ELEMENTS
- ESSENTIAL FATTY ACIDS

- ✓ NATURAL ACTIVE INGREDIENTS
- ✓ BEEHIVE ACTIVE INGREDIENT
- ✓ TASTY ORANGE FLAVOUR
- ✓ FOR THE WHOLE FAMILY



### INTAKES FOR 10 ML

- ROYAL JELLY .....	1000 MG
- VITAMIN B9 .....	100 µg







## Allergic conditions

### COMMON SYMPTOMS OF AN ALLERGIC REACTION INCLUDE:

- ➔ SNEEZING AND AN ITCHY, RUNNY OR BLOCKED NOSE
- ➔ ITCHY, RED, WATERING EYES
- ➔ WHEEZING, SHORTNESS OF BREATH AND COUGH
- ➔ A RAISED, ITCHY, RED RASH
- ➔ SWOLLEN LIPS, TONGUE, EYES OR FACE
- ➔ VOMITING OR DIARRHEA
- ➔ DRY, RED AND CRACKED SKIN

# TO TACKLE YOUR ALLERGIC GROUND

ALLER'STIM has been formulated with plants whose properties has been recognised to prevent and relieve symptoms of allergies.

## DON'T LET AN ALLERGY RUIN YOUR LIFE !

## OVERALL ACTIONS

1 PREVENTS ALLERGY

2 RELIEVES SYMPTOMS

3 REINFORCES IMMUNE SYSTEM

4 ANTI-HISTAMINE



| Flask of 125 mL



### MOST COMMON ALLERGENS

- ➔ HOUSE DUST
- ➔ DUST MITES
- ➔ PETS
- ➔ MOULD SPORES
- ➔ FOOD
- ➔ HAY FEVER
- ➔ INSECT BITES

✓ NATURAL & INNOVATIVE SOLUTION

✓ PREVENTS AND RELIEVES SYMPTOMS

✓ HIGHLY DOSED PLANT EXTRACTS

✓ FOR THE WHOLE FAMILY



### INTAKES FOR 10 ML

- NETTLE EXTRACT .....	2000 MG
- BLACKCURRANT EXTRACT .....	2000 MG
- ROSEHIP EXTRACT .....	2000 MG
- ECHINACEA EXTRACT .....	1200 MG
- MSM (METHYL SULFONYL METHANE) .....	100 MG
- VITAMIN C .....	12 MG
- PLANTAIN EXTRACT .....	8 MG
- CURCUMA EXTRACT .....	2 MG



## FLU STATES SIGNS AND SYMPTOMS



DRY COUGH



CHILLS



FEVER



RUNNY NOSE



HEADACHE



MUSCLE ACHES

## Cold, Chills, Flu states

### SYMPTOMS:

- STUFFY NOSE, RUNNY NOSE
- SNEEZING
- SORE THROAT
- FEVER
- FATIGUE
- FLU STATES

## COLD, CHILLS, FLU STATES

From the first symptoms, it is important to act immediately to prevent the affection of the lower respiratory tracts.

## BE PROTECTED FROM COLD!

### 1 ACTIONS ON ENT SYSTEM

Runny nose, congested nose, sore throat...

### 2 EASES BREATHING

### 3 HELPS REDUCE FATIGUE

### 4 BOOSTS NATURAL DEFENCES



| Flask of 125 ml



### ADVICES TO AVOID TO CATCH A COLD

- COVER WELL WHEN YOU GO OUTSIDE (THROAT AND EARS ARE VERY SENSITIVE TO COLD)
- REGULARLY VENTILATE YOUR HOME
- WASH YOUR HANDS OFTEN
- EXERCISE OFTEN

✓ ACTS ON CAUSES AND SYMPTOMS

✓ NATURAL FORMULA

✓ FROM 36 MONTHS

✓ NO SIDE EFFECTS OR CONTRAINDICATION



### INTAKES FOR 30 ML

- EUCALYPTUS EXTRACT .....	351 MG
- MULLEIN EXTRACT .....	7000 MG
- CAT'S CLAW EXTRACT .....	100.5 MG
- PEPPERMINT EXTRACT .....	400 MG
- BIRCH EXTRACT .....	100 MG
- ECHINACEA EXTRACT .....	11250 MG
- N-ACETYL-CYSTEINE .....	600 MG
- ROSEMARY DRY EXTRACT .....	250 MG
- VITAMIN C .....	80 MG / 100% RI*
- ZINC .....	10 MG / 100% RI*
- GRAPEFRUIT SEEDS DRY EXTRACT .....	20.1 MG
- ASTRAGALE DRY EXTRACT .....	1.35 MG
- PELARGONIUM DRY EXTRACT .....	45 MG

\*Reference intakes





## Growth, pregnancy, ageing

DEFICIENCY IN CALCIUM AND B12 CAN CAUSE A LOT OF TROUBLES :

- UNHEALTHY GROWTH
- WEAK BONES
- OSTEOPOROSIS
- MUSCLE WEAKNESS
- UNHEALTHY TEETH...

## BRITTLE BONES, UNHEALTHY TEETH, DEFICIENCY

*Don't let these troubles become persistent !*

# STRENGTHEN YOUR SKELETON !

- 1 **STRENGTHENS BONES AND TEETH**
- 2 **ENSURES MINERALISATION OF SKELETON**
- 3 **PREVENTS FRACTURES AND OSTEOPOROSIS**
- 4 **CONTRIBUTES TO BABY DEVELOPMENT DURING PREGNANCY**
- 5 **CONTRIBUTES TO THE PROPER FUNCTIONING OF NERVOUS SYSTEM**
- 6 **HELPS REDUCING CHOLESTEROL AND BLOOD PRESSURE**



| 125ml bottle



## AFTER THE CURE

TO MAINTAIN YOUR HEALTH, EAT A BALANCED DIET, INCLUDING :

- RAW FRUITS : ORANGES, APRICOTS, FIGS
- VEGETABLES : ONION, SPINACH, BROCCOLI, GREEN CABBAGE
- LEGUMES : WHITE BEANS, RED BEANS, CHICKPEAS, LENTILS AND SOYBEANS
- DRIED FRUITS: ALMONDS, WALNUTS, PISTACHIOS
- AROMATIC HERBS: DILL, OREGANO, MINT, THYME, SAGE, PARSLEY, BASIL
- MEAT : GIBLETS, FISH, EGGS, CLAMS

✓ **BALANCED CURE : VITAMIN B12 and CALCIUM**

✓ **IDEAL FOR CHILDREN, WOMEN AND ELDERS**

✓ **GOOD TASTE : STRAWBERRY FLAVOR**



| Leaflet

**FOR THE WHOLE FAMILY !**

## INTAKES FOR 1 TABLESPOON (10ML)

- **CALCIUM** ..... 120 mg  
- **VITAMIN B12** ..... 2.50 µg







## Growth and healthy body

THE BODY NEEDS NUTRIENTS TO FUNCTION PROPERLY : SOME VITAMINS AND MINERALS ARE ESSENTIALS FOR HEALTH. EXTRA INTAKE CAN BE USEFUL FOR CHILDREN, ADULTS AND SENIORS, TO ENCOURAGE GROWTH, ENERGY, APPETITE, WEIGHT GAIN...



## TO MAINTAIN A GOOD HEALTH :

- ➔ EAT MORE FRUITS AND VEGETABLES
- ➔ AVOID PROCESSED FOOD
- ➔ DRINK AT LEAST 1,5L OF WATER PER DAY
- ➔ EXERCISE AT LEAST TWICE A WEEK
- ➔ SLEEP AT LEAST 7 HOURS PER NIGHT

## LACK OF APPETITE, MALNUTRITION, FATIGUE

*The perfect boost to grow or gain weight.*

## RECOVER YOUR APPETITE !

FOR THE WHOLE FAMILY



1 STIMULATES APPETITE

2 CHILDREN GROWTH

3 WEIGHT GAIN

4 VITALITY AND TONUS



| Flask of 125 ml

- ✓ MULTI-ACTION SYRUP
- ✓ EXTRA STRAWBERRY TASTE
- ✓ FOR THE WHOLE FAMILY
- ✓ BASED ON VEGETAL EXTRACTS
- ✓ VITAMINS AND MINERALS



| LEAFLET

COMPLETE FORMULA

PER 10 ML	
- ACEROLA EXTRACT .....	240 mg
- FENUGREEK EXTRACT .....	80 mg
- GENTIAN EXTRACT .....	75 mg
- CALCIUM .....	14,5 mg
- VITAMIN B3 .....	12,8 mg
- VITAMIN E .....	10 mg
- MAGNESIUM .....	6,5 mg
- VITAMIN B5 .....	4 mg
- VITAMIN B1 .....	1,4 mg
- VITAMIN B2 .....	1,28 mg
- IRON .....	1,1 mg
- VITAMIN B6 .....	0,88 mg
- VITAMIN B9 .....	160 µg
- VITAMIN B8 .....	100 µg
- VITAMIN B12 .....	1,6 µg





## Anemia, iron deficiency

ANEMIA IS CHARACTERIZED BY AN INSUFFICIENT NUMBER OF RED BLOOD CELLS IN THE BLOOD. WITHOUT ENOUGH RED BLOOD CELLS, YOUR BLOOD CANNOT CARRY ENOUGH OXYGEN. THIS CAN LEAD TO MANY COMPLICATIONS MORE OR LESS SERIOUS.

## IRON DEFICIENCY, FATIGUE

RBC FORCE is an anti-anemia recommended for iron needs. During pregnancy or childhood, these needs are higher, so it is advisable to include more iron in their diet.

## COVERS YOUR IRON NEEDS

### OVERALL ACTIONS

FOR THE WHOLE FAMILY !



- 1 ANTI-ANEMIA
- 2 CONTRIBUTES TO RED BLOOD CELLS FORMATION
- 3 IMPROVES IRON ABSORPTION
- 4 CONTRIBUTES TO A PROPER GROWTH
- 5 REINFORCES IMMUNE SYSTEM



| Flask of 125 mL

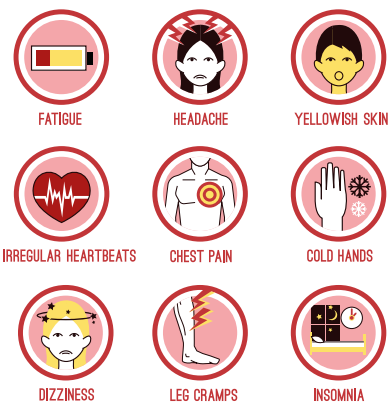


ANYONE CAN GET ANEMIA, BUT WOMEN, STRICT VEGANS, PEOPLE WITH POOR DIETS AND PEOPLE WITH CHRONIC DISEASES HAVE A HIGHER RISK OF ANEMIA.

DEPENDING ON THE TYPE OF ANEMIA, YOU CAN PREVENT AND EVEN CURE ANEMIA THROUGH DIET OR BY TAKING FOOD SUPPLEMENTS.

- ✓ IDEAL FOR THE WHOLE FAMILY
- ✓ HELPS TO COVER CHILDREN, PREGNANT WOMEN NEEDS
- ✓ RENEWABLE PROGRAM
- ✓ COMPLETE FORMULA

### ANEMIA SYMPTOMS



#### INTAKES FOR 10 ML

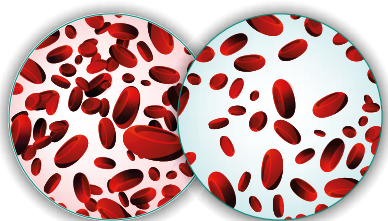
- IRON ..... 7 MG  
- VITAMIN C ..... 60 MG  
- VITAMIN B9 ..... 200 µG



## A N E M I A

Normal level  
of red blood cells

Anemia level  
of red blood cells



### Anemia, iron deficiencies

#### WHAT IS ANEMIA?

ANEMIA IS A DECREASE IN HEMOGLOBIN IN THE BLOOD, MAINLY DUE TO A LACK OF IRON AND VITAMINS. CONTAINED WITHIN RED BLOOD CELLS, HEMOGLOBIN IS USED TO CARRY OXYGEN IN BODY TISSUES, BRAIN, HEART, MUSCLES, ETC.

## DEFICIENCIES IN IRON, TIREDNESS

RBC force Max is highly dosed with iron and vitamins. It contributes to the formation of red blood cells and hemoglobin, essential for the proper transport of oxygen in the body.

## RECOVER ENERGY AND VITALITY!

### OVERALL ACTIONS

#### 1 ANTI-ANEMIA

#### 2 ENHANCES THE FORMATION OF HEMOGLOBIN

#### 3 DECREASES FATIGUE

#### 4 STIMULATES IMMUNE SYSTEM

#### 5 GROWTH WITHOUT DEFICIENCIES

FOR THE  
WHOLE FAMILY!



| Flask of 125 ml



#### WHAT ARE SYMPTOMS OF ANEMIA ?

- TIREDNESS
- PALE SKIN
- ACCELERATION OF THE HEART RATE
- SHORTNESS OF BREATH DURING EXERCISE
- COLD HANDS
- HEADACHE
- DIZZINESS
- GREATER VULNERABILITY TO INFECTIONS

✓ COVERS NEEDS IN IRON AND VITAMINS

✓ FOR THE WHOLE FAMILY: CHILDREN FROM 36 MONTHS, PREGNANT WOMEN, ELDERS...

✓ 10 DAYS RENEWABLE PROGRAM

✓ NO SIDE EFFECTS



#### INTAKES FOR 10 ML

- MALT EXTRACT .....	1000 MG
- HONEY .....	200 MG
- L-LYSINE .....	40 MG
- IRON .....	14 MG
- CALCIUM GLYCEROPHOSPHATE .....	20 MG
- VITAMIN B3 .....	20 MG
- VITAMIN B1 .....	4,2 MG
- ZINC .....	6 MG
- VITAMIN B5 .....	4 MG
- VITAMIN B2 .....	2 MG
- VITAMIN B6 .....	2 MG
- MANGANESE .....	0.5 MG
- COPPER .....	0.4 MG
- VITAMIN B9 .....	100 µg
- VITAMIN B12 .....	3 µg







## Sleep disorders

- INSOMNIA
- NIGHTMARES
- NERVOSITY, STRESS
- NIGHTTIME AWAKENINGS

# SLEEP DISORDERS, INSOMNIA

A lack of sleep greatly influences behavior and mood. It may be due to psychophysical factors (Stress, anxiety, depression ...) or physiological factors (too rich meal, taking medication, intense physical activity in the evening, excess of caffeine or alcohol).

## A NATURAL SOLUTION TO FALL ASLEEP EASIER!

### OVERALL ACTIONS

#### 1 SEDATIVE ACTION

Eases falling asleep, decreases nighttime awakenings and nightmares

#### 2 ANXIOLYTIC

Fights nervousness, stress, psychic disorders...

#### 3 EASES DEEP SLEEP

#### 4 NO ADDICTION

FOR THE  
WHOLE FAMILY!



| Flask of 125 ml



TO HELP YOU TO FALL ASLEEP FASTER AND TO FIND AGAIN A GOOD AND HEALTHY SLEEP, WE ADVISE YOU TO FOLLOW THESE SIMPLE RULES.



✓ NATURAL FORMULA

✓ FROM 36 MONTHS

✓ NO CONTRAINDICATIONS, NO SIDE EFFECTS

✓ NO ADDICTION



#### INTAKES FOR 20 ML

- ESCHSCHOLTZIA EXTRACT .....	6666 MG
- CHAMOMILE EXTRACT .....	2666 MG
- LINDEN EXTRACT .....	2666 MG
- VERBENA EXTRACT .....	2666 MG





## Constipation & Transit

### CONSTIPATION IS OFTEN LINKED TO:

- STRESS
- CHANGES IN LIFESTYLE
- TRAVELS AND CHANGES IN DIET
- HOSPITALISATION
- A LACK OF MOBILITY



### EASY TIPS TO AVOID CONSTIPATION:

- EAT MORE FIBERS: FRUITS, VEGETABLES, WHOLE GRAINS
- DRINK AT LEAST 1 LITER OF WATER PER DAY
- PRACTICE A PHYSICAL ACTIVITY
- MASSAGE YOUR STOMACH TO IMPROVE INTESTINAL PERISTALSIS
- GIVE PRIORITY TO STOOL IN THE MORNING

## CONSTIPATION, DIGESTION AND TRANSIT ISSUES

Constipation is a common condition that affects many people, many times a year.

## 4 COMPLEMENTARY ACTIONS

### 1 MILD LAXATIVE ACTION

### 2 REGULATION OF THE INTESTINAL FLORA

Prebiotic action

### 3 STIMULATION OF THE BILIARY SECRETION

By improving intestinal peristalsis

### 4 PROVIDES LAXATIVE FIBERS

FOR THE WHOLE FAMILY



| Flask of 125 ml

### ✓ IMMEDIATE AND EFFICIENT LAXATIVE ACTION

### ✓ NATURAL FORMULA BASED ON PLANTS WELL-KNOWN FOR THEIR LAXATIVE VIRTUES

### ✓ REGULATES MILDLY THE INTESTINAL TRANSIT

### ✓ NON IRRITATING AND NO SIDE EFFECTS



FIBER RICH FOODS

### NATURAL FORMULA

INTAKES FOR	FOR 1 TABLESPOON (10 ML)	FOR 2 TABLESPOONS (20 ML)
TAMARIND EXTRACT .....	5700 MG	11400 MG
FRUCTOOLIGOSACCHARIDES .....	1 000 MG	2 000 MG
MARSHMALLOW EXTRACT .....	862 MG	1 724 MG
ARTICHOKE EXTRACT .....	862 MG	1 724 MG
PRUNE JUICE .....	250 MG	500 MG
FIG JUICE .....	100 MG	200 MG





## Constipation

### CONSTIPATION IS OFTEN LINKED TO:

- ➔ A SLOWING DOWN OF INTESTINAL PERISTALSIS
- ➔ DEHYDRATION
- ➔ AN UNBALANCED INTESTINAL FLORA
- ➔ STRESS
- ➔ A LACK OF PHYSICAL ACTIVITY
- ➔ A CHANGE OF DIET

# CONSTIPATION, TRANSIT ISSUES

Constipation is a pathology that affects everyone, specifically women.

## RELEASES AND RELIEVES QUICKLY!

**RECOMMENDED FOR  
CHRONIC AND TRANSIENT  
CONSTIPATIONS**

### 1 STRONG AND NON-IRRITATING LAXATIVE ACTION

Fluidification of stools

### 2 EASES DIGESTION & REDUCES SPASMODIC COLITIS

Peristaltism stimulated

### 3 REGULATES TRANSIT & INTESTINAL FLORA

Thanks to its prebiotic action



| Flask of 125 mL



### EASY TIPS TO AVOID CONSTIPATION:

- ➔ EAT MORE FIBERS: FRUITS, VEGETABLES, WHOLE GRAINS
- ➔ DRINK AT LEAST 1 LITER OF WATER PER DAY
- ➔ PRATICE A PHYSICAL ACTIVITY
- ➔ MASSAGE YOUR STOMACH TO IMPROVE INTESTINAL PERISTALSIS
- ➔ GIVE PRIORITY TO STOOL IN THE MORNING

- ✓ RELIEVES IMMEDIATELY
- ✓ REGULATES TRANSIT SUSTAINABLY
- ✓ BALANCES INTESTINAL FLORA
- ✓ NATURAL FORMULA BASED ON PLANTS WELL-KNOWN FOR THEIR LAXATIVE VIRTUES
- ✓ NON IRRITATING AND NO SIDE EFFECTS

**NATURAL FORMULA**

**FOR THE  
WHOLE FAMILY**



Fiber rich foods

### INTAKES FOR 30 ML

- WHEAT DEXTRIN (contains 70% of fibers) ..... 1800 MG
- CONCENTRATED FIG JUICE ..... 1600 MG
- CONCENTRATED PRUNE JUICE ..... 900 MG







## Liquid & Frequent Stools

**DIARRHEA IS USUALLY A SYMPTOM OF A BOWEL INFECTION, WHICH CAN BE CAUSED BY:**

- ➔ A VIRUS
- ➔ BACTERIA
- ➔ PARASITES

**OTHER POSSIBLE CAUSES OF SHORT-TERM DIARRHEA INCLUDE:**

- ➔ FEELINGS OF ANXIETY, FOOD ALLERGY

## WATERY POO, PAIN, DEHYDRATION

*Diarrhea leads to symptoms of dehydration and may create mucosa lesions which can be serious if it's not recognised and treated quickly.*

## 4 SPECIFIC ACTIONS

**1 STOPS DIARRHEA**

**2 RELIEVES ABDOMINAL PAIN**

**3 ANTISEPTIC**

**4 REHYDRATION**

**SPECIALLY ADAPTED TO BE GIVEN FROM 36 MONTHS  
STRAWBERRY FLAVOUR**



| Flask of 125 mL

**CURATIVE ACTION**  
1 TO 3 TSP, TWICE OR THREE TIMES A DAY



### PREVENTING DIARRHEA:

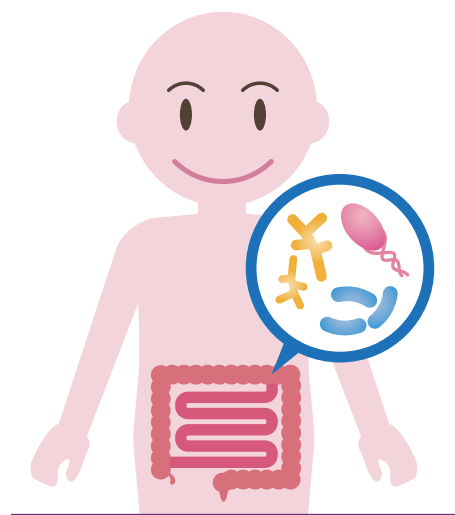
- ➔ WASH YOUR HANDS THOROUGHLY WITH SOAP AND WARM WATER AFTER GOING TO THE TOILET AND BEFORE EATING OR PREPARING FOOD.
- ➔ AVOID SHARING TOWELS, FLANNELS, CUTLERY OR UTENSILS
- ➔ AVOID RETURNING TO WORK OR SCHOOL UNTIL AT LEAST 48 HOURS AFTER THE LAST EPISODE OF DIARRHEA

✓ QUICK RELIEF

✓ ACTIVE & PROTECTIVE COMPLEX

✓ NO SIDE EFFECTS

✓ NATURAL & INNOVATIVE



### INTAKES FOR 45 ML:

- BLACKTHORN EXTRACT ..... 4,5 G
- POTENTILLA EXTRACT ..... 4,5 G
- GREEN ANISE EXTRACT ..... 4,5 G
- BRAMBLE EXTRACT ..... 3 G
- FENNEL EXTRACT ..... 3 G
- LEMON BALM EXTRACT ..... 3 G
- ROSEMARY EXTRACT ..... 500 MG
- GRAPEFRUIT SEEDS EXTRACT ..... 150 MG
- SUCROSE ..... 1,125 G
- SODIUM ..... 46,6 MG





## Stomach ache

### THEY ARE VARIOUS TYPES:

- CONSTIPATION
- FLATULENCE
- POOR DIGESTION
- STOMACH ACIDITY

## STOMACH PAIN, BLOATING

Discover a new way to live, free from belly pain and bloating, thanks to the power of PHYTODIGEST.

# LIVE FREE FROM STOMACH ACHE

## 1 IMPROVES DIGESTION

## 2 RELIEVES STOMACH PAIN

## 3 INCREASES INTESTINAL TONE

## 4 PROVIDES FIBERS (LAXATIVE)

## 5 ELIMINATES BLOATING






| Flask of 125mL



### PREVENTING BELLY PAIN

- EAT SLOWLY AND CHEW WELL
- EAT SMALLER MEALS
- FOCUS ON VEGGIES AND FIBERS
- DRINK MORE WATER, LESS SODA

- ✓ SYNERGY OF ACTIONS
- ✓ ACTS ON LIVER / STOMACH / INTESTINES
- ✓ NO SIDE EFFECTS
- ✓ FOR THE WHOLE FAMILY
- ✓ PLANT BASED PRODUCT

STOMACH	LIVER	INTESTINES
		
<ul style="list-style-type: none"> <li>→ Strengthens and balances the activity of the stomach</li> <li>→ Relieves stomach pain</li> <li>→ Anti-nausea</li> </ul>	<ul style="list-style-type: none"> <li>→ Hepatobiliary protection</li> <li>→ Detoxing: eliminates toxins</li> </ul>	<ul style="list-style-type: none"> <li>→ Reduced digestive disorders and gases</li> <li>→ Quiet abdominal pain, antispasmodic</li> <li>→ Increases intestinal tone</li> <li>→ Standardizes the transit</li> <li>→ Regenerates the intestinal flora</li> </ul>

### INTAKES FOR 10 ML

- FENNEL EXTRACT .....	2000 mg
- STAR ANISE EXTRACT .....	1000 mg
- GENTIAN EXTRACT .....	75 mg
- GINGER EXTRACT .....	1000 mg
- FRUCTO-OLIGOSACCHARIDES .....	1500 mg
- DRIED PAPAYA .....	660 mg





**LIVER ENHANCES VITAL FUNCTIONS TO KEEP YOU IN A GOOD HEALTH. THIS ORGAN IS RESPONSIBLE FOR:**

## TOXINS AND LIVER TROUBLES

## PURIFIES AND CLEANS YOUR BODY

## PURIFICATION AND PROTECTION

- 1 STIMULATES BILE SECRETION**
- 2 SET THE LIVER FREE FROM TOXINS**
- 3 REGENERATES LIVER TISSUES**
- 4 EASES DIGESTION & TRANSIT**
- 5 DIURETIC AND LAXATIVE EFFECTS**
- 6 PREVENTS FROM HEPATIC DISORDERS**

1 Flask of 125 mL

Document only for presentation to the professional by one 3 CHÈNES representative having received training, cannot be used for any other purpose.

**www.3chenes.com**



- ➔ MAINTAIN A HEALTHY WEIGHT
- ➔ HAVE A HEALTHY LIFESTYLE
- ➔ VACCINATIONS (HEPATITIS)
- ➔ AVOID MEDICINE OVERDOSE
- ➔ DRINK MODERATELY AND AVOID DRUG USE

- ✓ NATURAL ACTIVE INGREDIENTS
- ✓ PLANT EXTRACTS
- ✓ AGAINST LIVER AND INTESTINAL DISORDERS
- ✓ NO SIDE EFFECT

**INTAKES FOR 10 ML**

Document only for presentation to the professional by one 3 CHÈNES representative having received training, cannot be used for any other purpose.

**www.3chenes.com**







## Nausea and vomiting

### WHAT IS NAUSEA ?

- IT IS OFTEN FELT BEFORE VOMITING AND IS ACCOMPANIED BY STOMACH CRAMPS OR DISGUST
- IT MAY BE ACCOMPANIED BY INCREASED SALIVARY SECRETION, HEADACHE, VOMITING, SWEATING, LOSS OF APPETITE, DIZZINESS...
- IT CAN LEAD TO FAINTING

## NAUSEA, VOMITING, MOTION SICKNESS

*They come from various origins: smells, migraines, digestive problems, pregnancy, motion sickness, etc.*

# CALMS ALL TYPES OF NAUSEA

## 5 GLOBAL ACTIONS !

### 1 ANTI NAUSEA AND VOMITING

### 2 ANTI SPASMODIC

Intestinal contractions are mainly responsible for vomiting

### 3 ANTI ANXIETY

Treats emotional-type nausea

### 4 CALMS DIGESTIVE DISORDERS

Treats physiological-type nausea

### 5 REHYDRATION OF THE BODY

Following water loss caused by vomiting



30 MIN BEFORE DEPARTURE



RELIEVES QUICKLY



| Flask of 125 mL



### TO PREVENT NAUSEA:

- KEEP YOUR HEAD UP AND STAND UP GENTLY TO AVOID HAVING YOUR HEAD SPINNING
- APPLY A COLD AND WET CLOTH TO YOUR FOREHEAD TO RELIEVE PAIN
- BY CAR, ALWAYS LOOK AT THE ROAD AND STRAIGHT AHEAD
- OPEN WINDOWS OR GO OUT TO GET SOME FRESH AIR
- BREATHE GENTLY AND RELAX

✓ NATURAL FORMULA BASED ON PLANT EXTRACTS

✓ FOR THE WHOLE FAMILY (FROM 36 MONTHS)

✓ NO SIDE EFFECTS

✓ RELIEVES QUICKLY



## GLOBAL SOLUTION !

INTAKES FOR	(10 ML)	(20 ML)
PEPPERMINT EXTRACT	2.25 G	4.5 G
POPPY EXTRACT	2.25 G	4.5 G
GINGER EXTRACT	80 MG	160 MG
SUCROSE	250 MG	500 MG
STARCH	35 MG	70 MG
SODIUM CHLORIDE	27 MG	54 MG





## Nausea, queasiness

### NAUSEA REFERS TO :

- A FEELING OF QUEASINESS AND DISCOMFORT, OFTEN EXPERIENCED JUST BEFORE VOMITING AND ACCOMPANIED BY UNCONTROLLABLE STOMACH CONTRACTIONS, BEFORE AND DURING VOMITING.
- IT IS ACCOMPANIED BY INCREASED SALIVARY SECRETION, VOMITING, HEADACHE, ABDOMINAL PAIN, SWEATING, DIZZINESS, LOSS OF APPETITE. NAUSEA CAN LEAD TO FAINTING ATTACKS.

## NAUSEA, VOMITING, MOTION SICKNESS

These disorders can come from unpleasant odors, migraines, motion sickness, digestive problems or a feeling of anxiety.

## SOOTHES ALL TYPES OF NAUSEA

### GLOBAL ACTIONS ON:

#### 1 VOMITING CENTER CONTROL

#### 2 STOMACH SPASMS

Which are responsible for vomiting

#### 3 DIGESTIVE DISORDERS

Physiological nausea

#### 4 NERVOUS DISORDERS

Emotional nausea



| Box of 15 tablets



### TO EASE SICKNESS :

- KEEP YOUR HEAD STILL AND GET UP SLOWLY TO PREVENT HEAD SPINS.
- APPLY A COOL, WET CLOTH ON YOUR FOREHEAD TO EASE THE PAIN
- ANXIETY IS KNOWN TO MAKE NAUSEA WORSE, SO TRY TO RELAX AND BREATHE SLOWLY.
- GET THE AIR FLOWING BY OPENING WINDOWS OR TAKE A WALK OUTSIDE
- DRINK ENOUGH FLUIDS TO REHYDRATE YOURSELF AFTER VOMITING AND EAT SMALL PORTIONS

✓ NO SIDE EFFECT

✓ HIGHLY DOSED TABLET

✓ QUICK RELIEF AND CALMNESS

✓ AS FROM 6 YEARS OLD



| DISPLAY DELIVERED FULL



### PER 1 TABLET

- GINGER EXTRACT .....	75 MG
- PLANT EQUIVALENT .....	750 MG
- SAGE .....	50 MG
- LEMON BALM .....	50 MG
- CARAWAY ESSENTIAL OIL .....	2 MG
- PEPPERMINT ESSENTIAL OIL .....	2 MG



## Nausea, queasiness

### NAUSEA REFERS TO :

- A FEELING OF QUEASINESS AND DISCOMFORT, OFTEN EXPERIENCED JUST BEFORE VOMITING AND ACCOMPANIED BY UNCONTROLLABLE STOMACH CONTRACTIONS, BEFORE AND DURING VOMITING.
- IT IS ACCOMPANIED BY INCREASED SALIVARY SECRETION, VOMITING, HEADACHE, ABDOMINAL PAIN, SWEATING, DIZZINESS, LOSS OF APPETITE. NAUSEA CAN LEAD TO FAINTING ATTACKS.

## NAUSEA, VOMITING, MOTION SICKNESS

*These disorders can come from motion sickness, emotions, unpleasant odors, migraines, digestive problems or a feeling of anxiety.*

# SOOTHES ALL TYPES OF NAUSEA

### 1 VOMITING CENTER CONTROL

### 2 STOMACH SPASMS RESPONSIBLE FOR VOMITING

### 3 DIGESTIVE DISORDERS *Physiological nausea*

### 4 NERVOUS DISORDERS *Emotional nausea*

**ON-THE-GO  
SPRAY**



| 25ml spray



### TO EASE SICKNESS :

- KEEP YOUR HEAD STILL AND GET UP SLOWLY TO PREVENT HEAD SPINS.
- APPLY A COOL, WET CLOTH ON YOUR FOREHEAD TO EASE THE PAIN
- ANXIETY IS KNOWN TO MAKE NAUSEA WORSE, SO TRY TO RELAX AND BREATHE SLOWLY.
- GET THE AIR FLOWING BY OPENING WINDOWS OR TAKE A WALK OUTSIDE
- DRINK ENOUGH FLUIDS TO REHYDRATE YOURSELF AFTER VOMITING AND EAT SMALL PORTIONS

✓ NO SIDE EFFECT

✓ EASY USE, ON-THE-GO

✓ QUICK RELIEF AND CALMNESS

✓ AS FROM 3 YEARS OLD



| DISPLAY

**SPECIALLY ADAPTED FOR  
MOTION SICKNESS AND  
EMOTIONAL NAUSEA**

PER 20 SPRAYS (2ML)

- GINGER EXTRACT .....	806 MG
PLANT EQUIVALENT .....	500 MG
- SAGE EXTRACT .....	85 MG
PLANT EQUIVALENT .....	33 MG
- LEMON BALM EXTRACT .....	85 MG
PLANT EQUIVALENT .....	33 MG
- BACH FLOWER WALNUT ( <i>JUGLANS REGIA</i> ) .....	3 MG
- BACH FLOWER ELM ( <i>ULMUS PROCERA</i> ) .....	3 MG
- PEPPERMINT ESSENTIAL OIL .....	2 MG





## Digestive disorders

### EXCESSIVE FLATULENCE CAN BE CAUSED BY :

- SWALLOWING MORE AIR THAN USUAL
- EATING FOOD DIFFICULT TO DIGEST
- EATING TOO FAST OR TOO MUCH
- RECURRING INDIGESTION
- STRESS...

## BLOATING, INTESTINAL PAIN

Bloating and intestinal pain are usually not a severe problem, but can be really uncomfortable and may prevent you from doing what you want at the moment.

# FREE AND PURIFY YOUR BOWEL

## 4 ACTIONS FOR A QUICK RELIEF:

- 1 **ABSORBS BACTERIA, TOXINS AND GAS**
- 2 **PURIFIES INTESTINES**
- 3 **STIMULATES DIGESTION**
- 4 **STOPS INTESTINAL FERMENTATION**

AMONGST MARKET'S  
LEADERS FOR MORE  
THAN 10 YEARS

IMMEDIATE  
ACTION



| Box of 30 tablets



### PREVENTION :

Excessive flatulence can usually be treated by making changes in your diet and lifestyle.

Avoid the following food in particular : any foods with artificial sweeteners, chewing gum, fizzy drinks.

For a better digestion, you can :

- CHEW SLOWLY
- EXERCISE MORE
- STOP SMOKING

✓ NATURAL FORMULA : VEGETAL CHARCOAL AND FENNEL

✓ SYNERGY OF 2 WELL-KNOWN ACTIVE INGREDIENTS

✓ DISCREET AND PRACTICAL USE

✓ NO SIDE EFFECT



| DISPLAY

1 TO 4 TABLETS  
AFTER THE MEAL

### PER 4 TABLETS:

- PLANT CHARCOAL ..... 840MG
- FENNEL EXTRACT ..... 140MG





## Digestive disorders

### THEY ARE VARIOUS TYPES OF DIGESTIVE DISORDERS :

- CONSTIPATION
- FLATULENCE
- BLOATING
- POOR DIGESTION
- STOMACH ACIDITY

## BLOATING & DIGESTIVE DISCOMFORT

CARBOLINE® Digest acts immediately on the whole digestive tract to facilitate digestion and relieve abdominal pain, flatulence, heaviness...

## 4 ACTIONS FOR A TOTAL RELIEF

**HIGHLY DOSED  
FORMULA**

**PROMPT  
ACTION**

**1 STOMACHIC**

**2 SPASMOLYTIC**

**3 DIGESTIVE ENZYMES**

**4 CARMINATIVE**



| Box of 10 unicadoses of 15 mL



### SOME ADVICE TO PREVENT BELLY PAIN :

- EAT SLOWLY AND CHEW WELL
- EAT SMALLER MEALS
- FOCUS ON VEGGIES AND FIBERS
- DRINK MORE WATER AND LESS SODAS

✓ NOMADIC & EASY TO USE FORMAT

✓ COMPLETE FORMULA

✓ 4 PLANT EXTRACTS + DIGESTIVE ENZYME INSIDE

✓ NO SIDE EFFECT

**MINT FLAVOUR  
FRESHNESS FEELING**

### INTAKES FOR 1 UNICADOSE® OF 15 ML

- FENNEL EXTRACT .....	6 G
- GINGER EXTRACT .....	1 G
- STAR ANISE EXTRACT .....	750 MG
- GENTIAN EXTRACT .....	75 MG
- FRUCTO-OLIGOSACCHARIDES (FOS) .....	1,5 G
- PAPAIN .....	660 MG





## Stomach ache

### THEY ARE VARIOUS TYPES:

- CONSTIPATION
- TRAPPED WIND
- POOR DIGESTION
- STOMACH ACIDITY

## STOMACH PAIN, BLOATING

Discover a new way to live, free from belly pain and bloating, thanks to the power of PHYTODIGEST.

# LIVE FREE FROM STOMACH ACHE

### 1 IMPROVES DIGESTION

### 2 RELIEVES STOMACH PAIN

### 3 INCREASES INTESTINAL TONE

### 4 PROVIDES FIBERS (LAXATIVE)

### 5 ELIMINATES BLOATING



| Box of 10 unicadoses



| 200 ml syrup



### PREVENTING BELLY PAIN

- EAT SLOWLY AND CHEW WELL
- EAT SMALLER MEALS
- FOCUS ON VEGGIES AND FIBERS
- DRINK MORE WATER, LESS SODA

- ✓ SYNERGY OF ACTIONS
- ✓ LIVER / STOMACH / INTESTINES
- ✓ NO SIDE EFFECTS
- ✓ FOR THE WHOLE FAMILY
- ✓ PLANT BASED PRODUCT

STOMACH	LIVER	INTESTINES
<ul style="list-style-type: none"> <li>→ Strengthens and balances the activity of the stomach</li> <li>→ Relieves stomach pain</li> <li>→ Anti-nausea</li> </ul>	<ul style="list-style-type: none"> <li>→ Hepatobiliary protection</li> <li>→ Detoxing: eliminates toxins</li> </ul>	<ul style="list-style-type: none"> <li>→ Reduced digestive disorders and gases</li> <li>→ Quiet abdominal pain, antispasmodic</li> <li>→ Increases intestinal tone</li> <li>→ Standardizes the transit</li> <li>→ Regenerates the intestinal flora</li> </ul>

### INTAKES FOR 10 ML

- FENNEL EXTRACT .....	2000 mg
- EXTRACT OF STAR ANISE .....	1000 mg
- GENTIAN EXTRACT .....	1000 mg
- GINGER EXTRACT .....	1000 mg
- FRUCTO-OLIGOSACCHARIDES .....	1500 mg
- DRIED PAPAYA .....	660 mg
<b>EQUIVALENT FRESH FRUIT .....</b>	<b>2300 mg</b>
- LEMON ESSENTIAL OIL .....	1,25 mg
- DILL ESSENTIAL OIL .....	1,25 mg
- ESSENTIAL OIL OF JUNIPER .....	1,25 mg
- MINT ESSENTIAL OIL .....	1,25 mg
- ROSEMARY ESSENTIAL OIL .....	0,25 mg







## Urinary troubles

### SYMPTOMS OF URINARY TRACT INFECTION :

- PAIN, BURNING OR STINGING WHEN YOU PEE
- NEEDING TO PEE MORE OFTEN AND URGENTLY THAN NORMAL
- DARK, CLOUDY OR STRONG-SMELLING URINE
- PAIN LOW DOWN IN THE TUMMY
- FEELING GENERALLY UNWELL, ACHY, SICK AND TIRED

## PAIN, BURNING, TINGLING

Most cases occur when bacteria that live harmlessly in the bowel or on the skin get into the bladder through the urethra.

# COMPLETE URINARY PROTECTION

## 4 SYNERGIC ACTIONS:

1 ANTI-INFLAMMATORY

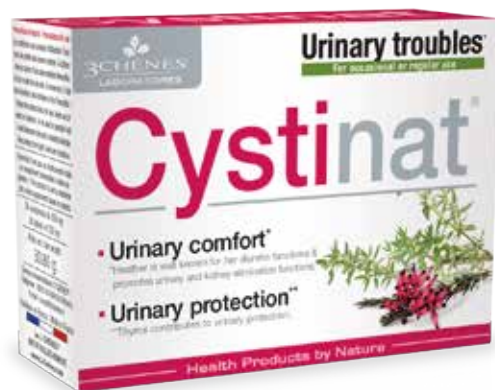
2 ANTISEPTIC

3 DIURETIC

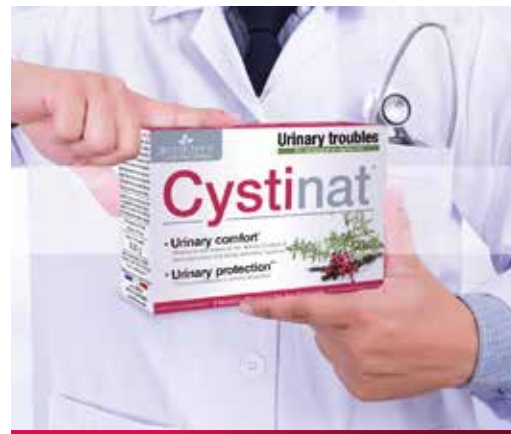
4 BACTERIOSTATIC



**NATURAL COMPLEX**  
**6 TABLETS / DAY**  
**QUICK RELIEF**



| Box of 56 tablets



### HOW TO PREVENT URINARY TROUBLES ?

- NOT USING PERFUMED BUBBLE BATH, SOAP AROUND YOUR GENITALS
- HAVING A SHOWER, RATHER THAN A BATH
- GOING TO THE TOILET AS SOON AS YOU NEED TO PEE
- ALWAYS EMPTYING YOUR BLADDER FULLY
- DRINKING HELP TO STOP BACTERIA MULTIPLYING IN YOUR BLADDER
- EMPTYING YOUR BLADDER AS SOON AS POSSIBLE AFTER HAVING SEX
- WEARING UNDERWEAR MADE FROM COTTON, RATHER THAN SYNTHETIC

✓ COMPLEX OF 6 EFFICIENT PLANTS

✓ DOESN'T MASK PREGNANCY TEST RESULTS (if need be)

✓ NO INTERACTION WITH OTHER TREATMENT

✓ NO SIDE EFFECT



| DISPLAY DELIVERED FULL

**CURATIVE ACTION**  
**6 TABLETS / DAY**  
**QUICK RELIEF**

**PREVENTIVE ACTION**  
**2 TABLETS / DAY**  
**1 MONTH CURE**

### PER 6 TABLETS

- CRANBERRY EXTRACT .....	1200 MG
I.E FRESH FRUIT .....	30 G
- THYME .....	120 MG
- BLUEBERRY .....	120 MG
- HEATHER EXTRACT .....	120 MG
I.E PLANT .....	480 MG
- MALLOW .....	120 MG
- MARSHMALLOW .....	120 MG





## Depression

**DEPRESSION IS A PATHOLOGICAL STATE, THAT USUALLY LASTS FOR SEVERAL WEEKS.**

### SYMPTOMS ARE :

- ➔ DEEP SADNESS AND MORAL PAIN
- ➔ LOSS OF SELF-ESTEEM
- ➔ LOSS OF INTEREST IN THINGS YOU USED TO LOVE
- ➔ LOSS OF APPETITE
- ➔ SLEEPING TROUBLES
- ➔ FEELING CONSTANTLY TIRED
- ➔ ANXIETY SYMPTOMS

## DEPRESSION, STRESS, ANXIETY

*Depression is considered the illness of the century, since millions of people are affected.*

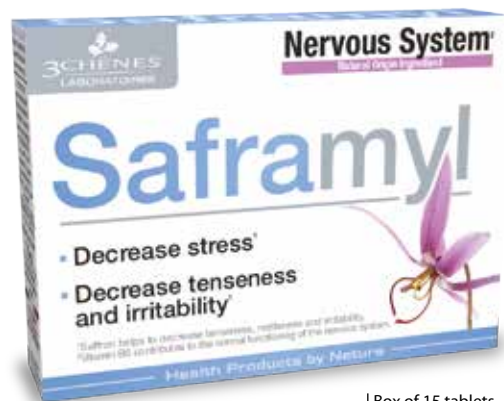
# TURN TO HEALTHY MOOD

**1 PROMOTES SEROTONIN PRODUCTION**

**2 INHIBITS SEROTONIN REUPTAKE**

**3 FACILITATES SEROTONIN ASSIMILATION**

**100 % OF PATIENTS ARE NO LONGER DEPRESSED AFTER 14 DAYS.**



Box of 15 tablets  
ACL: 4843882



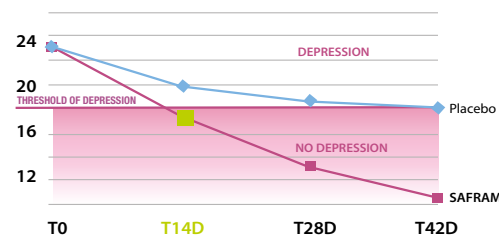
### RECOMMENDATIONS :

- ➔ FOLLOW SAFRAMYL PROGRAMME DURING AT LEAST 15 DAYS
- ➔ PRACTICE SPORT REGULARLY, WALK 30 MINUTES PER DAY AT LEAST
- ➔ FOLLOW A THERAPY WITH A PSYCHOLOGIST, JOIN A SUPPORT GROUP
- ➔ CUT DOWN ALCOHOL AND SMOKING, EAT HEALTHY
- ➔ TRY MEDITATION AND MINDFULNESS METHODS

- ✓ 100% NATURAL FORMULA
- ✓ QUICK EFFECT, REINFORCED DAY BY DAY
- ✓ SAFE AND CONTROLLED PRODUCT
- ✓ NO SIDE EFFECT, NO ADDICTION

## CLINICAL TEST RESULTS :

► Hamilton scale\*



\*Test used by scientists to evaluate depression level

**INCOMPARABLE RESULTS WITH 1 TABLET PER DAY**

### PER 1 TABLET

- SAFFRON EXTRACT ..... 30 MG  
INCLUDING SAFRANAL ..... 0,6 MG  
- TRYPTOPHAN ..... 75 MG  
- VITAMIN B6 ..... 1 MG / 72% RI\*

RI\* : REFERENCE INTAKES





## Anemia

### ANEMIA SYMPTOMS ARE :

- FATIGUE, EXHAUSTION
- PHYSICAL WEAKNESS
- WEAK IMMUNE SYSTEM
- SHORTNESS OF BREATH
- INFECTIONS
- HEADACHE
- PALE SKIN...

## ANEMIA, EXHAUSTION, LOW IMMUNITY

*With Oligofer, iron deficiencies and fatigue will just be a distant memory.*

## TO TONE UP, PROTECT & GROW STRONGER

**1 COVERS 100% OF THE DAILY NEEDS**  
of iron, vitamin C and B9

**2 BOOSTS IMMUNE SYSTEM**  
resistance to infections

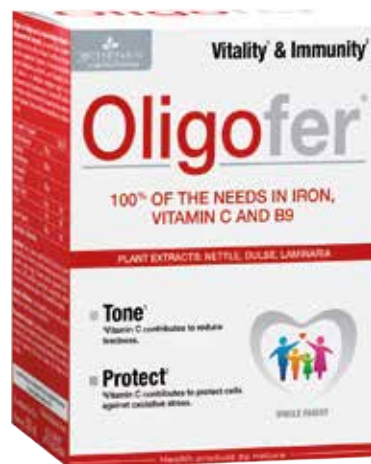
**3 INCREASES ENERGY**  
& vitality level

**4 FORMATION OF MATERNAL TISSUE**  
during pregnancy

**5 HEALTHY GROWTH**  
& brain development

**6 ANTI-INFLAMMATORY**  
& antioxidant

**FOR THE WHOLE FAMILY**



Box of 20 unicadoses  
EAN : 3525722020251



### PREVENTION :

**PREFER THE FOLLOWING FOODS WHICH ARE RICH IN IRON, VITAMIN C AND B9 :**

- RED MEAT
- SHELLFISH
- BEANS
- LEAFY GREENS
- CEREALS
- BANANA...

- ✓ GLOBAL ACTION ON ANEMIA
- ✓ 3 PLANT EXTRACTS + VITAMINS & IRON
- ✓ COVERS 100% OF IRON NEEDS
- ✓ COVERS 100% OF VITAMINS C AND B9 NEEDS
- ✓ 20 DAYS PROGRAM



### OPTIMISED GALENIC

- On-The-Go
- Unbreakable
- Safe
- Easy opening
- Instant bioavailability
- Photo protection
- 100 % Recyclable

**HIGH DOSAGE**

### PER 1 UNICADOSE :

- NETTLE EXTRACT	1500 MG
- PALMARIA PALMATA EXTRACT	1300 MG
- LAMINARIA EXTRACT	1300 MG
- IRON	14 MG / 100% RI
- VITAMIN C	60 MG / 100% RI*
- VITAMIN B9	200 µg / 100% RI*

\*RI : REFERENCE INTAKES







## Cramps

**CRAMPS ARE SUDDEN CONTRACTIONS OCCURING DURING A PHYSICAL EFFORT OR DURING SLEEP. CAUSES ARE VARIOUS : POOR BLOOD CIRCULATION, IMBALANCED DIET, DEHYDRATION, PHYSICAL EFFORTS...**

**THEY ARE DUE TO:**

- ➔ A LACK OF MINERALS (DUE TO DEHYDRATION, IMBALANCED DIET...)
- ➔ A TOO IMPORTANT ACIDITY THAT PREVENTS THE FIXATION OF MAGNESIUM AND CALCIUM IN MUSCLES CELLS
- ➔ FREE RADICALS ACCUMULATION
- ➔ A LACK OF OXYGEN IN THE MUSCLE (STRONG PHYSICAL EFFORT)
- ➔ A WRONG NERVOUS INFLUX TO THE MUSCLE

## SUDDEN PAINFUL MUSCLE CONTRACTION

*Leg cramps are a common and usually harmless condition where the muscles in your leg suddenly become tight and painful.*

## RELAX YOUR TIGHT MUSCLES

### 5 SYNERGIC ACTIONS

- 1 RELAXES MUSCLE**  
*By regulating nervous influx*
- 2 BALANCES MINERALS LEVELS**  
*Calcium, potassium, magnesium*
- 3 HELPS MINERAL FIXATION**  
*By decreasing acidity*
- 4 ANTIOXIDANT**  
*Eliminates free radicals*
- 5 INCREASES MUSCLES OXYGENATION**

**ONLY 1 TABLET  
PER DAY**



| Box of 30 tablets



### TO PREVENT CRAMPS :

- ➔ STRETCH MUSCLES BEFORE AND AFTER SPORT
- ➔ STRETCH YOUR LEGS BEFORE GOING TO BED
- ➔ FOLLOW A HEALTHY DIET, FAVORING FRUITS AND VEGETABLES
- ➔ DRINK AT LEAST 1.5L PER DAY
- ➔ HYDRATE MORE IF YOU EXERCISE

- ✓ RELIEVES FROM THE 1<sup>ST</sup> TAKE
- ✓ ALL TYPES OF CRAMPS: DAY AND NIGHT
- ✓ COMPLETE AND EFFECTIVE FORMULA
- ✓ NO SIDE EFFECT



| DISPLAY

**PREVENTIVE &  
CURATIVE**

**ALL TYPES OF  
CRAMPS**

#### PER 1 TABLET

- CALCIUM	142 MG	17.8%RI*
- POTASSIUM	80 MG	4%RI*
- MAGNESIUM	57.1 MG	15.2%RI*
- IRON	2.1 MG	15%RI*
- SELENIUM	50 µg	90%RI*

\*RI : Reference Intakes





## Tendons, joints, muscles

**PROBLEMS CAN BE CAUSED BY A SPORTING ACTIVITY, ADVANCED AGE, OVERWEIGHT, BUT ALSO BY :**

- ➔ A ONE-OFF ACCIDENT (EXCEPTIONAL EFFORT TO LIFT A HEAVY OBJECT, EXTREME TORSION, FALL...)
- ➔ A DEGENERATIVE DISEASE (RHEUMATOID ARTHRITIS, OSTEOARTHRITIS, ETC.) OR AN INFECTION
- ➔ THE PRACTICE OF REPETITIVE MOVEMENTS OR FORCED POSITIONS (TO PUT A TILING, TO GARDEN, TO WORK STANDING ALL DAY...)

# JOINTS PAIN, MUSCLE CONTRACTION

*Theses problems can concern everyone : adult, children, elders, high level athlete or occasional sportsman.*

## RELIEVED JOINTS & RELAXED MUSCLES

### 5 COMPLEMENTARY ACTIONS

- 1 ANTI-INFLAMMATORY**  
*Quick pain relief and better mobility*
- 2 ANTI-RHEUMATIC**  
*Fights against rheumatoid arthritis*
- 3 ANTI-ECCHYMOTIC**  
*Reduces bruises (blood effusion under skin)*
- 4 ANTI-EDEMATOUS**  
*Reduces plasma accumulation and swelling*
- 5 ANTIOXIDANT**  
*Eliminates free radicals created by the inflammation*

**NO GREASY EFFECT  
NON-STICKY**

**QUICK  
ACTION**



100 ml tube  
50 ml roll-on



#### TO PREVENT JOINTS PROBLEMS :

- ➔ STAY ACTIVE HELPS TO REDUCE AND PREVENT PAIN
- ➔ EAT A BALANCED DIET TO GET ALL NUTRIENTS YOU NEED
- ➔ AVOID OVERWEIGHT
- ➔ TRY TO MAINTAIN A PROPER POSTURE

#### TO PREVENT MUSCLES PAIN :

- ➔ MASSAGE YOUR MUSCLES REGULARLY
- ➔ EAT ENOUGH MEAT, SLOW SUGAR AND MAGNESIUM
- ➔ DRINK ENOUGH WATER (1.5L)
- ➔ WARM UP BEFORE EXERCISING

- ✓ FOR ARTHRITIS, RHEUMATISMS, OEDEMAS, SPRAINS, ELONGATIONS, BRUISES...
- ✓ RELIEVES JOINTS AND TENDONS
- ✓ RELAXES AND SOOTHES MUSCLES
- ✓ REDUCES STIFFNESS AND IMPROVES MOBILITY
- ✓ FOR THE WHOLE FAMILY: CHILDREN, ADULTS AND ELDERS



| DISPLAY GEL

| DISPLAY ROLL-ON

### NATURAL COMPLEX 6 PLANTS + 3 ESSENTIAL OILS

#### COMPOSITION :

- ARNICA EXTRACT ..... 10%
- MEADOWSWEET EXTRACT ..... 10%
- HARPAGOPHYTUM EXTRACT ..... 5%
- SOLOMON'S SEAL EXTRACT ..... 5%
- HORSE CHESTNUT EXTRACT ..... 5%
- LIQUORICE EXTRACT ..... 5%
- ESSENTIAL OILS OF JUNIPER, CORIANDER, MINT





## Tendons, joints, muscles

- ➔ JOINT PAIN
- ➔ LACK OF FLEXIBILITY
- ➔ ECHYMOSIS
- ➔ MUSCLE PAIN
- ➔ DIFFICULTY TO MOVE

## MUSCLE & JOINT PAIN

These problems may concern everyone : adult, children, elders, high level athlete or occasional sportsman.

## RELIEVED JOINTS & RELAXED MUSCLES

### 5 COMPLEMENTARY ACTIONS

- 1 ANTI-INFLAMMATORY**  
*Quick pain relief and better mobility*
- 2 ANTI-RHEUMATIC**  
*Fight against rheumatoid arthritis*
- 3 ANTI-ECCHYMOTIC**  
*Reduces bruises (blood effusion under skin)*
- 4 ANTI-EDEMATOUS**  
*Reduces plasma accumulation and swelling*
- 5 ANTIOXIDANT**  
*Eliminates free radicals created by the inflammation*



| Box of 14 patches



### TO PREVENT JOINTS PROBLEMS :

- ➔ STAY ACTIVE HELPS TO REDUCE AND PREVENT PAIN
- ➔ EAT A BALANCED DIET TO GET ALL NUTRIENTS YOU NEED
- ➔ AVOID OVERWEIGHT
- ➔ TRY TO MAINTAIN A PROPER POSTURE

### TO PREVENT MUSCLES PAIN :

- ➔ MASSAGE YOUR MUSCLES REGULARLY
- ➔ EAT ENOUGH MEAT, SLOW SUGAR AND MAGNESIUM
- ➔ DRINK ENOUGH WATER (1.5L)
- ➔ WARM UP BEFORE EXERCISING

- ✓ CLINICALLY PROVEN RESULTS
- ✓ EFFECTIVE FROM 1<sup>ST</sup> APPLICATION
- ✓ RELIEVES ALL DAY
- ✓ EASY, FAST & DISCREET
- ✓ PLANT EXTRACTS & ESSENTIAL OILS

### CLINICAL STUDY :

- Increases joint flexibility (53%)
- Decreases joint pain (62%)
- Increases joint comfort (66%)
- Global satisfaction (85%)



| DISPLAY

**MORE FLEXIBILITY  
OF JOINTS**

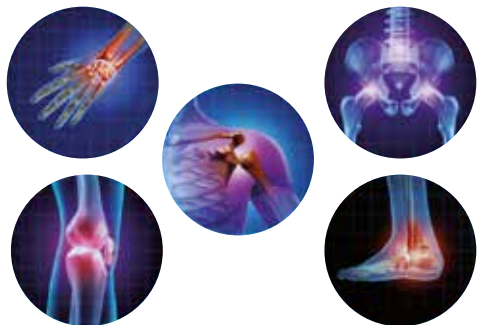
**DECREASE PAIN  
INTENSITY**

### COMPOSITION

- SEAL OF SOLOMON
- MEADOWSWEET
- LIQUORICE
- RED VINE
- NETTLE
- PINEAPPLE
- PAPAYA
- BLACKCURRANT
- ESSENTIAL OILS OF JUNIPER, ROSEMARY, MINT







## Tendons, joints, muscles

### JOINTS TROUBLES :

- PAINFUL JOINTS
- DIFFICULTY TO MOVE
- OSTEOARTHRITIS
- SPONDYLITIS
- DISTROPHY OF JOINTS

## JOINT TROUBLES

Are you bored of ineffective treatments and side effects?  
We offer you a natural solution to ease your pain.

## DON'T LET JOINT PAIN RULE YOUR LIFE

**1 RELIEVES PAIN**

**2 IMPROVES MOBILITY**

**3 RESTORES JOINTS**

**4 STRENGTHENS BONES AND CARTILAGE**

**5 STIMULATES NATURAL DEFENSES**

**6 ELIMINATES TOXINS, ANTIOXIDANT**

**ACTS ON PAIN AND DISEASE CAUSES**



| Box of 60 tablets



### IF YOU HAVE JOINT PAIN :

- EXERCISE REGULARLY BUT AVOID RUNNING AND WEIGHT TRAINING AS THIS PUTS PRESSURE ON YOUR JOINTS. RATHER SWIMMING OR CYCLING.
- MAINTAIN A GOOD POSTURE AND AVOID STAYING IN THE SAME POSITION FOR TOO LONG.
- BEING OVERWEIGHT CAN INCREASE YOUR JOINT PAIN SO WATCH YOUR DIET AND IF NEEDED CONSULT A NUTRITIONIST.

- ✓ QUICKLY RELIEVES PAIN
- ✓ LONG-TERM TREATMENT
- ✓ COMPLETE FORMULA
- ✓ WITH PLANT EXTRACTS
- ✓ NO SIDE EFFECT



Poster

**1 MONTH PROGRAMME**

### PER 2 TABLETS

BLACKCURRANT EXTRACT	200 MG
HARPAGOPHYTUM EXTRACT	100 MG
COLLAGEN HYDROLYZATE	150 MG
CHONDROÏTINE SULFATE	135 MG
GLUCOSAMINE SULPHATE	105 MG
BAMBOO EXTRACT	90 MG
MANGANESE	2 MG / 100 % RI*

RI\* : REFERENCE INTAKES





## Memory, exams

### WHEN YOU HAVE :

- MEMORY TROUBLES
- STAYING FOCUSED TROUBLE
- DAYTIME FATIGUE
- SLEEPING TROUBLE
- EXAMS STRESS

## MEMORY, EXAMS

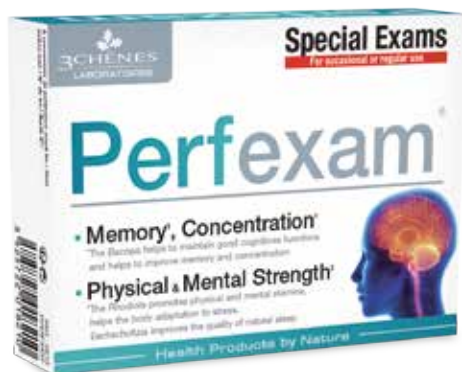
When you need to perform, take Perfexam,  
the complete solution to be successful.

# GIVE YOU EVERY CHANCE TO SUCCEED

## OVERALL ACTIONS

- 1 **INCREASES MEMORY & CONCENTRATION**
- 2 **IMPROVES SLEEP QUALITY**
- 3 **INCREASES STRESS RESISTANCE**
- 4 **STRENGTHENS WORK CAPACITIES**

**EXCLUSIVE**



Box of 30 tablets  
EAN : 3525722018210



### PRESCRIPTION :

- INTERVIEW
- DRIVER LICENSE
- CONTEST
- GRADUATION...

- ✓ SPECIAL EXAMS, GRADUATION
- ✓ NATURAL SOLUTION
- ✓ NO SIDE EFFECT
- ✓ 15 DAYS PROGRAM
- ✓ OCCASIONAL OR REGULAR USE



### PER 2 TABLETS

- L-GLUTAMINE .....	300 MG
- RHODIOLA EXTRACT .....	180 MG
- CALCIUM .....	60 MG / 7% RI*
- BACOPA EXTRACT .....	125 MG
- PLANT EQUIVALENT .....	1000 MG
- TAURINE .....	100 MG
- MAGNESIUM .....	56.25 MG / 15% RI*
- GLUCURONOLACTONE .....	35.60 MG
- VITAMIN B3 .....	16 MG / 100% RI*
- VITAMIN B5 .....	6 MG / 100% RI*
- VITAMIN B6 .....	1.4 MG / 100% RI*
- VITAMIN B1 .....	1.1 MG / 100% RI*
- PHOSPHOLIPIDS .....	19.80 MG
- INCLUDING PHOSPHATIDYLSERINE .....	4 MG
- GINKGO BILOBA EXTRACT .....	12 MG
- PLANT EQUIVALENT .....	648 MG
- CALIFORNIA POPPY EXTRACT .....	5 MG
- PLANT EQUIVALENT .....	25 MG

RI\* : Reference Intakes



## Libido, performance

MUIRA PUAMA IS A TREE FROM THE AMAZONIAN FOREST, WHOSE BARK HAS BEEN TRADITIONALLY USED BY INDIANS FOR HUNDREDS YEARS FOR ITS VIRTUES: IT CONTAINS MAINLY STEROLS AND AN ALKALOID, MUIRAPUAMINE, WHICH ACTS ON THE BLOOD CIRCULATION THANKS TO ITS VASODILATORY PROPERTIES. THE MUIRA PUAMA IS SCIENTIFICALLY RECOGNIZED BY THE PHARMACOPOEIA (OFFICIAL REGISTRATION).

## LOW LIBIDO, ERECTILE DYSFUNCTION

*Decrease of libido and erectile disorders are very common problems, it can happen any time in one's life.*

# BOOST YOUR LIBIDO

- 1 **ENHANCES LIBIDO**
- 2 **PROMOTES ERECTILE FUNCTION**
- 3 **INCREASES PHYSICAL RESISTANCE**
- 4 **INCREASES MENTAL RESISTANCE**

**MILLIONS OF BOTTLES SOLD**



| 200ml syrup



## ERECTILE DYSFUNCTION CAN OFTEN BE IMPROVED BY :

- LOSING WEIGHT IF YOU ARE OVERWEIGHT
- STOP SMOKING
- CUTTING BACK ALCOHOL CONSUMPTION
- NOT TAKING ILLEGAL DRUGS
- EXERCISING REGULARLY
- REDUCING STRESS

- ✓ **HIGH QUALITY**
- ✓ **NO DRUG INTERACTION**
- ✓ **NO CONTRAINDICATION**
- ✓ **NO SIDE EFFECT**



| DISPLAY DELIVERED FULL

**FOR MEN AND WOMEN**

**NATURAL AND EFFICIENT ANSWER**

PER 10 ML:

- MUIRA PUAMA EXTRACT ..... 9 910 mg







## Fatigue

**WE ALL FEEL TIRED SOMETIMES. A LOT OF SYMPTOMS CAN APPEAR IN FATIGUE SITUATIONS :**

- DAYTIME DROWSINESS
- COLD, FLU
- INFECTIONS
- IRRITABILITY
- LOW MOTIVATION...

## TIREDNESS, LOW ENERGY

*Have you ever thought about plants extracts ?*

# RECOVER QUICKLY TONUS & VITALITY

**1 REVITALISING**

**2 STIMULATING**

**3 BOOSTING NATURAL DEFENSES**

**4 ANTIOXIDANT**

**5 STRENGTHENING PERFORMANCES**



| Box of 24 chewable tablets



ACÉROLA IS A VERY IMPORTANT SOURCE OF NATURAL VITAMIN C, WITH A CONTENT 10 TO 40 TIMES GREATER THAN ORANGE. ACÉROLA ALSO CONTAINS TWICE AS MUCH MAGNESIUM, VITAMIN B5 AND POTASSIUM AS ORANGE.

IT ALSO CONTAINS :

- VITAMIN A
- VITAMINS B1, B2, B3
- IRON
- PHOSPHORUS
- PROTEINS
- BETA-CAROTENE
- POLYPHENOLS

✓ NATURAL BOOSTER

✓ REINFORCED FORMULA

✓ EXTRA GOOD TASTE

✓ FULL OF ANTIOXIDANTS



**500 MG OF VITAMIN C  
PER TABLET**

**PER 1/4 TABLET :**

- VITAMIN C ..... 125 MG / 156% RI\*
- LEMON POWDER ..... 5 MG
- BLACKCURRANT POWDER ..... 5 MG
- ACÉROLA EXTRACT ..... 4,1 MG
- DOG ROSE POWDER ..... 2,3 MG

RI\* : REFERENCE INTAKES





## Cold, allergy

THE NOSE FILTERS, MOISTENS AND REHEATS AIR TO THE LUNGS. IT CAN BE A GATEWAY TO INFECTIONS (VIRUSES, BACTERIA). IT MUST BE CLEAN TO ACT AS A PROTECTOR AGAINST EXTERNAL ATTACKERS AND TO AVOID CONTAMINATION OF THE SINUSES, EARS OR BRONCHI.

## COLD, ALLERGY

*The nose has a crucial role in case of cold and allergy. You must take care of it for prevention and treatment.*

# BREATHE DEEPLY AGAIN !

## 4 ACTIONS:

**1 CLEANS AND DECONGESTS**

**2 FLUIDIFIES MUCUS**

**3 TREATS INFECTION**

**4 RELIEVES IRRITATION**

**MEDICAL  
DEVICE**



| Spray of 50ml



THE NASAL SPRAY DEVELOPED BY LABORATOIRE LES 3 CHÊNES® IS THE FIRST PHYSIOLOGICAL SOLUTION COMBINING 7 ACTIVE INGREDIENTS SPECIFICALLY SELECTED TO CLEANSE, RELEASE, PROTECT AND RELIEVE NASAL MUCOSA.

- ✓ FIRST SOLUTION WITH 4 ACTIONS
- ✓ MEDICAL DEVICE
- ✓ OCCASIONAL OR DAILY USE
- ✓ 7 NATURAL INGREDIENTS
- ✓ FOR ADULTS AND CHILDREN



| DISPLAY

### COMPOSITION

- SEA WATER
- ALOE VERA DRY EXTRACT
- ICELANDIC MOSS FLORAL EXTRACT
- MYRTLE ESSENTIAL OIL
- COPPER
- MANGANESE
- SULPHUR





## Tonus, Immune system

**PIONEER OF PROPOLIS IN PHARMACY,  
LES 3 CHÊNES® PROPOSES A WIDE AND  
COMPLETE RANGE TO RELIEVE AND TREAT :**

- ➔ WINTER PATHOLOGIES
- ➔ COLD
- ➔ COUGH
- ➔ FLU
- ➔ SORE THROAT

## FATIGUE, LOW IMMUNE SYSTEM, SORE THROAT

*3 Chênes offers a complete range of propolis based products,  
to help you overcome all kinds of winter troubles*

## DISCOVER THE BENEFITS OF PROPOLIS

**1 BOOSTS IMMUNE SYSTEM, TONIC**

**2 ANTISEPTIC, ANTI-INFLAMMATORY**

**3 FIGHTS AGAINST DRY AND WET COUGH**

**4 EASES AND SOOTHES THROAT**

**5 CLEANS, DECONGESTS, ANTISEPTIC**



### DID YOU KNOW?

PROPOLIS IS A RESIN WITH ANTISEPTIC PROPERTIES THAT COATS THE BUDS OF CERTAIN TREES. IT IS A BARRIER AGAINST PATHOGENIC MICROBIAL AGENTS. THE BEES TAKE THE PROPOLIS AND BRING IT BACK INTO THEIR HIVE TO PROTECT IT FROM EXTERNAL AGGRESSIONS.

- ✓ FOR THE WHOLE FAMILY
- ✓ HIGH PROPOLIS DOSAGE
- ✓ PLANT EXTRACTS
- ✓ EXTRA SWEET TASTE
- ✓ NO SIDE EFFECT
- ✓ NO CONTRAINDICATION

#### PER 1 VIAL

PROPOLIS	- HONEY	1G
	- PROPOLIS EXTRACT	100MG
	- VITAMIN C	72MG / 90%RI*

RI\* : REFERENCE INTAKES

#### PER 9 SPRAYS

PROPOLIS	- PROPOLIS EXTRACT	240MG
	- THYME EXTRACT	4MG
	- PEPPERMINT ESSENTIAL OIL	1,6MG

#### PER 1 TABLET

PROPOLIS	- VITAMIN C	63MG / 79,2%RI*
	- PROPOLIS	50MG
	- MENTHOL	10MG
	- THYME EXTRACT	2,5MG

RI\* : REFERENCE INTAKES

#### PER 3 TABLESPOONS

PROPOLIS	- ACEROLA	3900MG
	- PROPOLIS EXTRACT	600MG
	- PEPPERMINT ESSENTIAL OIL	60MG
	- THYME EXTRACT	36MG



- PROPOLIS EXTRACT  
- SEA WATER







## Fatigue

ROYAL JELLY IS ONE OF THE MOST COMPLETE NATURAL INGREDIENT. IT CAN BE USED IN CASE OF :

- ➔ FATIGUE, COLD
- ➔ STRESS, SLEEP TROUBLES
- ➔ MENOPAUSE
- ➔ MEMORY TROUBLES
- ➔ DISEASE OR RECOVERY
- ➔ NUTRITIONAL DEFICIENCIES

## NEED AN EXTRA BOOST ?

*If you experience one of the above issues, royal jelly is made for you !*

# A PURE CONCENTRATE OF NATURE

**1 REVITALISING, REBALANCING**

**2 STIMULATING, TONING UP**

**3 INCREASING PHYSICAL AND MENTAL CAPACITIES**

**4 INCREASING RESISTANCE TOWARDS STRESS**

**5 FIGHTING TIREDNESS BRINGING VITAL NUTRIENTS**

**6 PROMOTING NATURAL DEFENSES**

**10 DAYS PROGRAM**

**REINFORCES IMMUNE SYSTEM**



| Box of 10 vials



ROYAL JELLY IS MADE BY BEES. IT IS A RARE AND PRECIOUS GIFT OF NATURE. IT IS THE ONLY FOOD OF THE QUEEN BEE AND IT IS SAID TO BE THE REASON OF ITS LONG LASTING LIFE. ROYAL JELLY IS A CONCENTRATE OF :

- ➔ AMINO ACIDS
- ➔ VITAMINS
- ➔ MINERALS
- ➔ TRACE ELEMENTS
- ➔ ESSENTIAL FATTY ACIDS...

✓ NATURAL PRODUCT FROM THE HIVE

✓ HIGH QUALITY ROYAL JELLY

✓ HIGHLY DOSED VIALS

✓ RENEWABLE PROGRAM



**RELIEVES TIREDNESS**



**PER 1 VIAL :**

**- ROYAL JELLY ..... 1000MG**





## Skin beauty

### SKIN BEAUTY IS LINKED TO :

- ELASTICITY
- PROTECTION
- SUPLENES
- HYDRATION...

## ALL TYPES OF SKIN ISSUES

If you have dry skin, imperfections, wrinkles, eczema...  
you should try our miracle remedy : borage oil.

# THE MIRACLE SKIN CURE

- 1 MOISTURIZES DEEPLY**
- 2 STRONG ANTIOXIDANT**
- 3 PREVENTS SKIN AGEING**
- 4 PROTECTS CELLS WALLS**
- 5 MAINTAINS ELASTICITY**
- 6 FIGHTS SKIN SLACKENING**

**YOUTH  
CAPITAL**



| Pillbox of 150 capsules



BORAGE OIL COMES FROM THE SEEDS OF  
*BORRAGO OFFICINALIS*.  
IT IS FULL OF DERMO-ACTIVES NUTRIENTS,  
ESSENTIALS FOR THE SKIN, SUCH AS :

- LINOLEIC FATTY ACID
- GAMMA-LINOLENIC FATTY ACID
- BETA-CAROTENE
- VITAMIN E
- VITAMIN D

- ✓ NATURAL BORAGE OIL + VITAMIN E
- ✓ RICH IN GAMMA LINOLENIC ACID
- ✓ PROVIDES ESSENTIAL NUTRIENTS
- ✓ FOR HEALTHY SKIN, HAIR AND NAILS
- ✓ LONG TERM PROGRAM (75 DAYS)



### ALSO USED FOR ARTHRITIS !

According to several studies, gamma-linolenic acid in  
borage oil would help reduce joint pain and swelling, as  
well as morning stiffness caused by rheumatoid arthritis.  
*Cameron 2009 ; Belch JJ 2000 ; Soeken KL 2003.*

**GUARANTEED  
CONTENT  
IN GAMMA  
LINOLENIC ACID**

### INTAKES PER 3 CAPSULES:

- BORAGE OIL ..... 1500 MG
- OF WHICH GAMMA LINOLENIC ACID ..... 300 MG
- VITAMIN E ..... 20,1 MG





## Menstrual well being

### WOMAN CYCLE IS DIFFICULT FOR YOUR BODY :

- TIREDNESS
- STRESS
- IRRITABILITY
- DISCOMFORT FEELING
- LOWER BELLY CRAMPS
- HEADACHES
- SENSITIVE CHEST
- SKIN IMPERFECTIONS...

## MENSTRUAL PERIOD SYMPTOMS

Every month, you endure the same discomfort during your periods.  
You can stop this with our natural plant based supplement.

# MENSTRUAL PROBLEMS

## 1 BALANCES HORMONS

## 2 RELIEVES PAIN

## 3 REGULATES MOOD

## 4 BEAUTIFIES SKIN

RECOVER  
SERENITY



| Pillbox of 150 capsules



IT IS IN THE SEEDS OF THE EVENING  
PRIMROSE (OENOTHERA BIENNIS)  
THAT ITS MAJOR ACTIVE INGREDIENTS  
ARE EXTRACTED FROM THE PRECIOUS  
RICH OIL.  
TWO ESSENTIAL POLYUNSATURATED  
FATTY ACIDS: LINOLEIC ACID AND  
GAMMA-LINOLENIC ACID.

- ✓ NATURAL PRIMROSE OIL + VITAMIN E
- ✓ PROVIDES ESSENTIAL FATTY ACIDS
- ✓ GLOBAL RELIEF DURING PERIODS
- ✓ RENEWABLE CURE (150 CAPS PER BOTTLE)
- ✓ INTAKE : ONLY 2 CAPS PER DAY

### HIGH CUSTOMER SATISFACTION

#### Testimonials :

- « I bought it for my daughter against  
menstruation pain. Evening primrose oil is  
known for its effects on menstrual comfort.  
Indeed, this alleviates the pain so limits the  
intake of analgesics. »

Magali G., 18/02/2017

- « I used it for hot flushes and in addition it  
makes my skin more supple! »

Martine C. 22/12/2016

GUARANTEED  
CONTENT  
IN GAMMA  
LINOLENIC ACID

#### PER 2 CAPSULES :

- EVENING PRIMROSE OIL ..... 1000 MG  
OF WHICH GAMMA LINOLENIC ACID ..... 100 MG







## Skin beauty

### SKIN BEAUTY IS LINKED TO :

- ELASTICITY
- PROTECTION
- SUPLENES
- HYDRATION...

## ALL TYPES OF SKIN ISSUES

*If you have very dry skin, wrinkles, eczema...  
you should try our miracle remedy : borage and evening primrose oil.*

# THE MIRACLE HYDRATION CURE

- 1 MOISTURIZES DEEPLY**
- 2 ENHANCES HYDRATION**
- 3 STRONG ANTIOXIDANT**
- 4 PREVENTS SKIN AGEING**
- 5 PROTECTS CELLS WALLS**
- 6 MAINTAINS ELASTICITY**
- 7 FIGHTS SKIN SLACKENING**

**YOUTH  
CAPITAL**



| Pillbox of 150 capsules



BORAGE OIL AND EVENING PRIMROSE OIL  
ARE FULL OF DERMO-ACTIVES NUTRIENTS,  
ESSENTIAL FOR THE SKIN, SUCH AS :

- GAMMA-LINOLENIC FATTY ACID
- BETA-CAROTENE
- VITAMIN E
- VITAMIN D

- ✓ NATURAL BORAGE OIL + VITAMIN E
- ✓ RICH IN GAMMA LINOLENIC ACID
- ✓ PROVIDES ESSENTIAL NUTRIENTS
- ✓ FOR HEALTHY SKIN, HAIR AND NAILS
- ✓ LONG TERM PROGRAM (75 DAYS)

### DISCOVER ALSO EVENING PRIMROSE OIL

Relieves menstrual symptoms



| Pillbox of 150 capsules

**GUARANTEED  
CONTENT  
IN GAMMA  
LINOLENIC ACID**

### PER 2 CAPSULES :

- EVENING PRIMROSE OIL ..... 500 MG  
OF WHICH GAMMA LINOLENIC ACID ..... 50 MG
- BORAGE OIL ..... 500 MG  
OF WHICH GAMMA LINOLENIC ACID ..... 100 MG
- VITAMIN E ..... 6,7 MG / 55,8% RI\*

RI\* : REFERENCE INTAKES





## Cardiovascular health

**OMEGA 3 ARE REQUIRED TO REGULATE CARDIOVASCULAR, IMMUNE AND INFLAMMATORY SYSTEMS. OMEGA 3 DEFICIENCY CAN LEAD TO :**

- ➔ HEART DISEASE
- ➔ WEIGHT GAIN
- ➔ JOINT PAIN, ARTHRITIS
- ➔ LOW IMMUNE SYSTEM
- ➔ CHRONIC FATIGUE
- ➔ EYESIGHT PROBLEMS...

## OMEGA 3 DEFICIENCY OR IMBALANCE

*To stay in good health, you must take great care of your omega 3 intake.*

# TAKE CARE OF YOUR HEALTH

**1 STRENGTHENS  
CARDIOVASCULAR SYSTEM**

**2 POWERFUL  
ANTI-INFLAMMATORY**

**3 ACTS ON COGNITIVE  
FUNCTIONS**

**4 IMPROVES MEMORY  
& CONCENTRATION**

**5 REINFORCES VISUAL ACUITY**

**REINFORCED  
FORMULA**



| Box of 60 capsules



**OMEGA 3 DEFICIENCY REFERS TO INSUFFICIENT LEVELS OF IMPORTANT LONG-CHAIN FATTY ACIDS. YOU MAY HAVE A DEFICIENCY IF YOU PRESENTS THESE SYMPTOMS :**

- ➔ DRY HAIR, ITCHY SKIN
- ➔ DEPRESSION AND ANXIETY
- ➔ MEMORY TROUBLES
- ➔ EXCESSIVE THIRST
- ➔ FREQUENT URINATION
- ➔ POOR CIRCULATION
- ➔ INTENSE MENSTRUAL CRAMPS...

✓ HIGHLY CONCENTRATED FORMULA

✓ EPA + DHA + VITAMIN E

✓ WELL KNOWN EFFICIENT PROPERTIES

✓ NO SIDE EFFECT

### BEST SOURCES OF OMEGA 3 :



**ONE MONTH  
RENEWABLE  
PROGRAM**

#### PER 3 CAPSULES :

- EPA .....	483 MG
- DHA .....	360 MG
- VITAMIN E .....	15 MG / 125% RI*

\*RI : REFERENCE INTAKES





## Vitamin deficiencies

### COMMON VITAMIN DEFICIENCIES SYMPTOMS:

- GROWTH DELAY / WEIGHT LOSS
- VISION TROUBLE
- HAIR LOSS & BRITTLE NAILS
- MEMORY & CONCENTRATION TROUBLE
- LOW IMMUNE SYSTEM – REPETITIVE DISEASES
- FRAGILE BONES & TEETH



CAN BE TAKEN BY THE WHOLE FAMILY !

### FOOD SOURCES OF :

VITAMIN A: Liver, Fish, Dairy products, Carrot, Spinach,  
Sweet Potato, Kale

VITAMIN E: Almond, Hazelnut, Sunflower Oil/seeds, Avocado, Seafood

VITAMIN K: Kale, Spinach, Broccoli, Swiss Chard, Parsley

VITAMIN D: Fish, Cod liver oil, Seafood, Egg yolks

## VITAMIN DEFICIENCIES, FRAGILE BONES, SLOW GROWTH

Discover our complete Dropper Range, easy to take and useful for the health of the whole family.

## COVER THE NEEDS OF THE WHOLE FAMILY

### OVERALL ACTIONS:

1 **BONES & TEETH DEVELOPMENT  
AND MINERALISATION**

2 **BRAIN PROPER DEVELOPMENT**

3 **IMMUNITY BOOSTER**

4 **HEALTHY GROWTH**

5 **ANTIOXIDANT**

**ONLY ONE DROP  
PER DAY!**



| 30 mL Droppers

✓ A WIDE AND COMPLETE RANGE

✓ PREVENT VITAMIN (A, D, E, K) DEFICIENCIES

✓ HIGHLY DOSED FOOD SUPPLEMENTS

✓ VITAL FUNCTIONS SUPPORT

INTAKES PER 10 DROPS	
- VITAMIN A	800 µg / 100% RI*
- VITAMIN E	12 MG / 100% RI*
RI* : REFERENCE INTAKES	

INTAKES PER 10 DROPS	
- VITAMIN E	1.5 MG
- VITAMIN A	96 µg
- VITAMIN D3	2.5 µg
- VITAMIN K2	9 µg

INTAKES PER 10 DROPS	
- VITAMIN D3 (400 IU)	10 µg / 200% RI*
- FISH OIL	300 MG / 30% RI*
inc. DHA	36 MG / 400% RI*
RI* : REFERENCE INTAKES	

INTAKES PER 10 DROPS	
- VITAMIN D3 (800 IU)	20 µg / 400% RI*
- VITAMIN K2	50 µg / 67% RI*
RI* : REFERENCE INTAKES	

INTAKES PER 10 DROPS	
- VITAMIN D3	50 µg / 1000% RI*
RI* : REFERENCE INTAKES	

INTAKES PER 10 DROPS	
- VITAMIN K2	50 µg / 67% RI*
RI* : REFERENCE INTAKES	







## Infections, skin problems

### FOR ALL THESE TROUBLES:

- STOMACH PAIN, DIARRHEA
- MYCOSIS
- CHRONICAL FATIGUE
- IMMUNE WEAKNESS
- DANDRUFF, ITCHY SCALP
- MOUTH SORES
- ACNE, ECZEMA...

## NEED A NATURAL SOLUTION ?

3 chènes has the perfect natural alternative to antibiotics: organic grapefruit seeds extract.

## YOUR MEDICINE CHEST IN A SINGLE PRODUCT

### FIGHTS AGAINST INFECTIONS:

- DIGESTIVE SYSTEM
- MYCOSIS
- URINARY TRACT
- CHRONICAL FATIGUE
- WEAK IMMUNE SYSTEM

**THE MOST POWERFUL  
NATURAL ANTIBIOTIC**

### TREATS EXTERNAL WOUNDS:

- MOUTH ULCERS, SORES
- HAIR PROBLEMS
- SKIN ISSUES
- NAILS (INGROWN, PANARIS)
- FEET MYCOSIS



| 50 and 100ml flasks



**GRAPEFRUIT SEEDS EXTRACT IS RENOWN FOR ITS  
EXTRAORDINARY PROPERTIES.**

**IT IS THE MOST POWERFUL NATURAL ANTIBIOTIC,  
ELIMINATING:**

- 800 STRAINS OF VIRUSES AND BACTERIA,
- 100 STRAINS OF FUNGI.

- ✓ ORGANIC PRODUCT
- ✓ ORAL USE + EXTERNAL USE
- ✓ FROM 36 MONTHS
- ✓ NATURAL & GLOBAL SOLUTION
- ✓ HIGH CONTENT IN BIOFLAVONOIDS



**MILLIONS  
BOTTLES SOLD  
EACH YEAR !**

**FOR THE WHOLE  
FAMILY**

**NATIVE EXTRACT,  
ALCOHOL FREE**

AMOUNTS FOR 15 x 3 DROPS

GRAPEFRUIT SEEDS EXTRACT ..... 2,05G

I.E. OF BIOFLAVONOIDS ..... 24,6MG





## Mobility, suppleness

JOINTS ARE ESSENTIAL TO A HEALTHY BODY.  
THEY ARE THE LINK WITH YOUR BONES. WHETHER  
DUE TO A DISEASE OR AN INJURY, WHEN JOINTS  
ARE DAMAGED, IT CAUSES PAIN AND PREVENTS  
MOVEMENTS.

## JOINT PAIN, DIFFICULTY IN MOVING ?

*Try our natural and organic cure.*

## GET OVER JOINT PAIN

**FULL  
WELL-BEING**

**NATURAL  
ENZYMES**

**1 MAINTAINS JOINTS HEALTH**

**2 MAINTAINS FLEXIBLE JOINTS**

**3 MAINTAINS FLEXIBLE  
TENDONS**

**4 ANTI-INFLAMMATORY**



| Box of 30 vials



## TO RELIEVE SHORT-TERM JOINT PAIN :

- PROTECT JOINT WITH A WRAP
- REST, DON'T MOVE THE CONCERNED JOINT
- PUT SOME ICE SEVERAL TIMES PER DAY
- ELEVATE JOINT ABOVE THE LEVEL OF YOUR HEART

## ✓ HIGH EFFICIENCY

Selected extracts and plants  
Highly dosed ingredients  
Reinforced actions thanks to enzymes

## ✓ NATURALITY

Vegetal extracts  
Organic certification



| FLOOR DISPLAY

**1 MONTH  
PROGRAM**

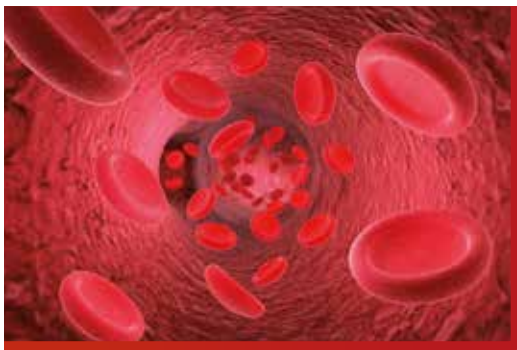


## PER 1 VIAL :

- HARPAGOPHYTUM EXTRACT ..... 3000 MG
- BLACKCURRANT EXTRACT ..... 1000 MG
- PAPAYA PUREE ..... 800 MG
- PINEAPPLE CONDENSED JUICE ..... 91 MG

INGREDIENTS FROM ORGANIC FARMING





## Blood circulation

### MANY PEOPLE, ESPECIALLY WOMEN, FACE CIRCULATION TROUBLES :

- SWOLLEN LIMBS
- HEAVY LEGS
- OEDEMA
- CRAMPS
- HEMORRHOIDS
- VARICOSE VEINS

## HEAVY LEGS, POOR BLOOD CIRCULATION

Try our natural and organic solution.

## FORGET YOUR BLOOD CIRCULATION TROUBLES

GLOBAL  
WELL-BEING

NATURAL  
ENZYMES

1 LIGHT LEGS SENSATION

2 BLOOD CIRCULATION  
ACTIVATION

3 VENOUS TONIFICATION

4 ANTI-INFLAMMATORY



| Box of 30 vials



### ADVICES TO HELP :

- WALK REGULARLY, WHENEVER POSSIBLE AFTER MEALS
- EXERCISE AS OFTEN AS YOU CAN
- STRETCH FOR 3 TO 5 MINUTES EVERY HOUR
- GET MESSAGES
- ELEVATE YOUR LEGS
- EAT EALTHY FOOD, DRINK RIGHT

### ✓ HIGH EFFICIENCY

Selected extracts and plants  
Highly dosed ingredients  
Reinforced actions thanks to enzymes

### ✓ NATURALITY

Vegetal extracts  
Organic certification



| FLOOR DISPLAY

1 MONTH  
PROGRAM



### PER 1 VIAL :

- RED VINE EXTRACT ..... 3125 MG
- WITCH HAZEL EXTRACT ..... 1875 MG
- PINEAPPLE CONDENSED JUICE ..... 545 MG
- PAPAYA PUREE ..... 227 MG

INGREDIENTS FROM ORGANIC FARMING







## Detoxification

OUR LIFESTYLE INFLUENCES OUR HEALTH.

OUR BODY CAN ACCUMULATE A LOT OF TOXINES,  
BECAUSE OF AN UNHEALTHY DIET (FAT, ALCOHOL,  
CAFFEINE), POLLUTION, SLEEP TROUBLES,  
STRESS...

## FATIGUE, DULL COMPLEXION, POOR DIGESTION...

*Try our natural and organic solution.*

## PURIFY AND BALANCE YOUR BODY

GLOBAL  
WELL-BEING

NATURAL  
ENZYMES

**1 DIURETIC, DEPURATIVE**

**2 HELPS FAT ELIMINATION**

**3 REMINERALISING**

**4 STIMULATES DIGESTION**

**5 INCREASES NUTRIENTS  
ASSIMILATION**



| Box of 30 vials



### DETOX CURE IS USED FOR :

- SEASON CHANGE
- FATIGUE
- DULL COMPLEXION
- HAIR LOSS
- POOR DIGESTION...

### ✓ HIGH EFFICIENCY

Selected extracts and plants  
Highly dosed ingredients  
Reinforced actions thanks to enzymes

### ✓ NATURALITY

Vegetal extracts  
Organic certification



| FLOOR DISPLAY

**1 MONTH  
PROGRAM**



#### PER 1 VIAL :

- BIRCH JUICE .....	6000 MG
- NETTLE EXTRACT .....	1000 MG
- PAPAYA PUREE .....	800 MG
- PINEAPPLE CONDENSED JUICE .....	272 MG
- FENNEL EXTRACT .....	5 MG

INGREDIENTS FROM ORGANIC FARMING



## Liver troubles

**YOU SHOULD DO A CURE TO CLEAN YOUR LIVER IF YOU HAVE THESE SYMPTOMS :**

- POOR DIGESTION
- STOMACH PAIN
- CHRONIC FATIGUE
- HEADACHES
- EXCESS WEIGHT
- SKIN PROBLEMS...

## TOXINS, LIVER TROUBLES

*Try our natural and organic solution.*

## PURIFY YOUR BODY, START REFRESH

GLOBAL  
WELL-BEING

NATURAL  
ENZYMES

- 1 FREE THE LIVER FROM TOXINS**
- 2 EASES DIGESTION & TRANSIT**
- 3 STIMULATES BILE SECRETION**
- 4 DIURETIC AND LAXATIVE EFFECT**



| Box of 30 vials



**LIVER FULFILLS VITAL FUNCTIONS FOR OUR HEALTH.**

**THIS ORGAN IS RESPONSIBLE FOR :**

- DETOXIFICATION
- REGULATING METABOLISM
- PURIFYING BLOOD
- SYNTHESIZING PLASMA PROTEINS
- ABSORBING AND STORING VITAMINS...

### ✓ HIGH EFFICIENCY

Selected extracts and plants  
Highly dosed ingredients  
Reinforced actions thanks to enzymes

### ✓ NATURALITY

Vegetal extracts  
Organic certification



| FLOOR DISPLAY

**1 MONTH  
PROGRAM**



**PER 1 VIAL :**

- BLACK RADISH JUICE ..... 7790 MG
- FUMITORY EXTRACT ..... 1000 MG
- PAPAYA PUREE ..... 800 MG
- PINEAPPLE CONDENSED JUICE ..... 387 MG
- ARTICHOKE EXTRACT ..... 325 MG

*INGREDIENTS FROM ORGANIC FARMING*





## Fatigue, low immunity

**BEE'S PRODUCTS ARE WELL-KNOWN FOR THEIR ANCESTRAL PROPERTIES.**  
**HONEY AND ROYAL JELLY CAN BE TAKEN IN CASE OF :**

- ➔ FATIGUE, COLD
- ➔ STRESS, SLEEP TROUBLES
- ➔ MENOPAUSE
- ➔ MEMORY TROUBLES
- ➔ DISEASE OR RECOVERY
- ➔ NUTRITIONAL DEFICIENCIES

## NEED AN EXTRA BOOST ?

*Try our natural and organic solution.*

# FEEL HEALTHY AND REVITALISED

**1 REVITALISING, REBALANCING**

**2 STIMULATING, TONING UP**

**3 INCREASES PHYSICAL AND MENTAL CAPACITIES**

**4 INCREASES RESISTANCE TOWARDS STRESS**

**5 FIGHT TIREDNESS AND BRING VITAL NUTRIENTS**

**6 PROMOTES NATURAL DEFENSES**

**GLOBAL  
WELL-BEING**

**NATURAL  
ENZYMES**



| Box of 30 vials



ORGANIC ROYAL JELLY IS EXCLUSIVE FOOD FOR THE QUEEN OF BEES THROUGHOUT HER LIFE.  
 ROYAL JELLY HAS BEEN A PRECIOUS TREASURE FOR THOUSANDS OF YEARS. TRADITIONALLY RECOGNISED FOR ITS RESOURCES IN PEPTIDES, FATTY ACIDS AND MINERALS AND VITAMINS B.  
 ORGANIC HONEY IS MADE BY BEES FROM THE NECTAR OF FLOWERS. ORGANIC HONEY IS RICH IN GLUCIDS WHICH ARE DIRECTLY AND EASILY ABSORBED BY THE BODY.

### ✓ HIGH EFFICIENCY

Selected extracts and plants  
 Highly dosed ingredients  
 Reinforced actions thanks to enzymes

### ✓ NATURALITY

Vegetal extracts  
 Organic certification



| FLOOR DISPLAY

**1 MONTH  
PROGRAM**



PER 1 VIAL :

- ROYAL JELLY ..... 1200 MG  
 - HONEY ..... 1000 MG

INGREDIENTS FROM ORGANIC FARMING







Exhaustion, low immunity

BEES PRODUCTS ARE WELL-KNOWN FOR THEIR ANCESTRAL PROPERTIES.

GINSENG AND ROYAL JELLY CAN BE TAKEN IN CASE OF :

- ➔ LOW IMMUNE SYSTEM
- ➔ STRESS, DEPRESSION
- ➔ MEMORY TROUBLES
- ➔ RECOVERY
- ➔ LOW LIBIDO
- ➔ NUTRITIONAL DEFICIENCIES

## TIRED, EXHAUSTED ?

Try our natural and organic solution.

# RECOVER 100% TONUS

1 INCREASES PHYSICAL RESISTANCE

2 STIMULATES MENTAL CAPACITIES

3 BOOSTS ENERGY AND LIBIDO

4 ANTIOXIDANT, ANTI-INFLAMMATORY

5 ENHANCES IMMUNE SYSTEM

GLOBAL WELL-BEING

NATURAL ENZYMES



| Box of 30 vials



GINSENG HAS BEEN RECOGNIZED FOR CENTURIES TO HAVE BENEFICIAL EFFECTS ON THE BODY. THIS ROOT IS MUCH APPRECIATED FOR ITS CONTENT IN GINSENOSIDES. COMBINED WITH ROYAL JELLY, THEY PROVIDE MANY VITAMINS (IN PARTICULAR FROM B GROUP), MINERAL SALTS (IRON, COPPER, PHOSPHORUS, CALCIUM, MAGNESIUM, ZINC), OLIGO-ELEMENTS (SILICIUM AND SELENIUM) AND AMINO ACIDS.

### ✓ HIGH EFFICIENCY

Selected extracts and plants  
Highly dosed ingredients  
Reinforced actions thanks to enzymes

### ✓ NATURALITY

Vegetal extracts  
Organic certification



| FLOOR DISPLAY

1 MONTH PROGRAM



PER 1 VIAL :

- GINSENG EXTRACT ..... 1000 MG  
- HONEY ..... 500 MG  
- ROYAL JELLY ..... 500 MG

INGREDIENTS FROM ORGANIC FARMING





## Slimming

- OVERWEIGHT ?
- SADDLEBAGS ?
- WATER RETENTION ?
- FAT EXCESS ?...

## NEED HELP TO GET FIT ?

Try our natural and organic solution.

# FAT BURNING & VITALITY

GLOBAL  
WELL-BEING

NATURAL  
ENZYMES

**1 STIMULATES WEIGHT LOSS**

**2 ACCELERATES FAT BURNING**

**3 DIURETIC, WATER ELIMINATION**

**4 STIMULATES DIGESTION**



| Box of 30 vials



## ADVICES TO SLIM FASTER:

- MAKE A BETTER BREAKFAST
- CHOOSE NATURAL WHOLE FOOD
- AVOID SWEET BEVERAGES
- PRACTICES FITNESS
- SLEEP AT LEAST 7 HOURS PER NIGHT
- DRINK PLENTY OF WATER

## ✓ HIGH EFFICIENCY

Selected extracts and plants  
Highly dosed ingredients  
Reinforced actions thanks to enzymes

## ✓ NATURALITY

Vegetal extracts  
Organic certification



| FLOOR DISPLAY

**1 MONTH  
PROGRAM**



## PER 1 VIAL :

- GUARANA EXTRACT .....	250 MG
- GREEN TEA EXTRACT .....	214 MG
IN EGCG .....	10 MG
IN CAFFEINE .....	35 MG
- PINEAPPLE CONDENSED JUICE .....	545 MG
- PAPAYA PUREE .....	227 MG

INGREDIENTS FROM ORGANIC FARMING





## Sleep disorders

### THEY MAY APPEAR IN DIFFERENT FORMS :

- NERVOUSITY, ANXIETY
- SLOW FALLING ASLEEP
- DAYTIME FATIGUE
- NIGHT AWAKENINGS...

## SLEEP DISORDERS, FATIGUE

Try our natural and organic solution.

# FOR PEACEFUL NIGHTS

GLOBAL  
WELL-BEING

NATURAL  
ENZYMES

1 REDUCES NERVOUSITY & STRESS

2 ANXIOLYTIC & SEDATIVE EFFECT

3 MUSCLES RELAXATION

4 EASES DIGESTION & ASSIMILATION



| Box of 30 vials



### ADVICES TO HELP :

- GET ON REGULAR HOURS OF SLEEP
- EXPOSE YOURSELF TO SUN EARLY IN THE DAY
- AVOID BRIGHT SCREENS AT NIGHT
- EXERCISE DURING THE DAY
- AVOID ALCOHOL, CAFFEINE

### ✓ HIGH EFFICIENCY

Selected extracts and plants  
Highly dosed ingredients  
Reinforced actions thanks to enzymes

### ✓ NATURALITY

Vegetal extracts  
Organic certification



| FLOOR DISPLAY

1 MONTH  
PROGRAM



### PER 1 VIAL :

- VALERIAN EXTRACT ..... 2250 MG
- PINEAPPLE CONDENSED JUICE ..... 909 MG
- PAPAYA PUREE ..... 800 MG
- PASSION FLOWER EXTRACT ..... 500 MG

INGREDIENTS FROM ORGANIC FARMING







## Spirulina

### IF YOU NEED HELP FOR THESE :

- SLIMMING, WEIGHT LOSS
- TONING, FATIGUE
- AGEING SYMPTOMS
- NATURAL DEFENSES

## NUTRITIONAL DEFICIENCIES, FATIGUE, EXCESS WEIGHT...

Try our natural solution : organic spirulina.

# THE MOST COMPLETE SUPERFOOD

- 1 **WEIGHT CONTROL**
- 2 **MUSCULAR METABOLISM**
- 3 **FAT BURNING**
- 4 **PHYSICAL RECOVERY**
- 5 **SKIN BEAUTY**
- 6 **ANTIOXIDANT, ANTI-AGEING**
- 7 **TONUS, VITALITY**
- 8 **APPETITE REDUCER**
- 9 **ANXIETY REGULATION**



| Box of 100 tablets

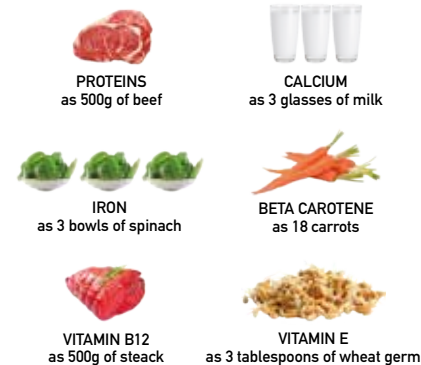


### WHAT IS SPIRULINA?

- NON-MARINE ALGAE
- RICH IN PROTEIN, VITAMINS, ANTIOXIDANTS, TRACE ELEMENTS, OMEGA 6...
- SELECTED BY THE EUROPEAN SPACE AGENCY TO FEED ASTRONAUTS ON MISSION
- RESPECTS THE EUROPEAN SPECIFICATIONS FOR ORGANIC PRODUCTION

- ✓ NATURAL AND GLOBAL SOLUTION
- ✓ ORGANIC CERTIFICATION
- ✓ FOR THE WHOLE FAMILY
- ✓ HIGH DOSAGE
- ✓ 15 DAYS PROGRAMME

### 6 TABLETS CONTAINS AS MANY :



**INGREDIENT APPROVED  
BY UNESCO AND WHO**



**PER 6 TABLETS  
- 3000 MG OF SPIRULINA**





## Skin irritation

### WHAT IS A SKIN IRRITATION ?

- ➔ INFLAMMATORY REACTION AND ALTERATION OF THE CUTANEOUS BARRIER
- ➔ FEELING OF TIGHTNESS AND TINGLING
- ➔ ITCHY SKIN

### FOR BABIES?

- ➔ DIAPER RASH
- ➔ AGGRESSION BY URINE AND DIAPER CHAFING

## FRAGILE AND DELICATE SKINS

*For the whole family from the youngest to the oldest*

## REPAIRS AND PROTECTS SENSITIVE SKIN

### ENRICHED IN

**1 ORGANIC CALENDULA**  
Softening, releasing and regenerating

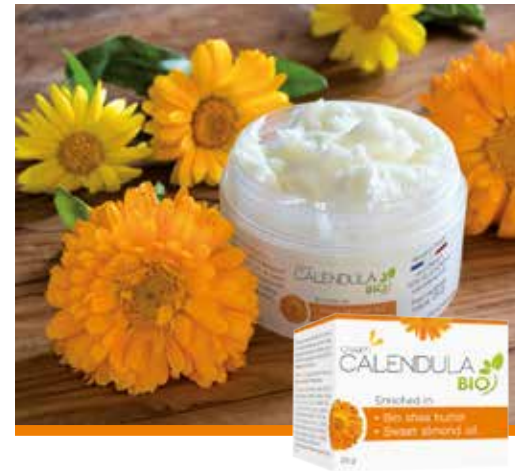
**2 ORGANIC SHEA BUTTER**  
Repairing, protecting and nourishing

**3 SWEET ALMOND OIL**  
Improving skin elasticity  
Preventing skin dryness

**HAND, FACE AND BODY**



| 25g pot



### DO YOU KNOW « CALENDULA » ?

- PLANT USED FOR CENTURIES FOR ITS COSMETICS AND MEDICAL VIRTUES.
- FLOWERS RICH IN ANTIOXYDANT CAROTEN AND FLAVONOIDS.
- SOOTHES AND REPAIRS IRRITATED AND REACTIVE SKIN.

✓ RELEASE FROM THE 1<sup>ST</sup> APPLICATION

✓ MULTI-ACTION CREAM (REDNESS, ROUGHNESS, TINGLING AND FLAKING)

✓ DERMATOLOGICALLY TESTED

✓ ORGANIC AND PARABEN FREE



### INGREDIENTS

CALENDULA  
SHEA BUTTER  
SWEET ALMOND OIL  
VEGETAL GLYCERIN  
VITAMIN E  
SUNFLOWER SEEDS OIL



# GOODBYE ROOTS!



*A real  
**MAKE-UP**  
for HAIR!*



**A NATURAL LOOK → NO DEMARCATION**

Thanks to **SPECIFIC PURE PIGMENTS**



**IMMEDIATE AND OPTIMAL HOLD**

**RAINFOOD** and **MOISTURE** resistant



**PROTECTS AND NOURISHES**

**HAIR & ROOTS:** No breakage – Soft touch

**SCALP:** No irritation, no itching, no dry dandruff

**THE LAST GENERATION  
OF SPRAYS  
(doesn't clog up)**



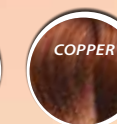
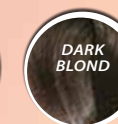
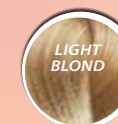
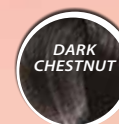
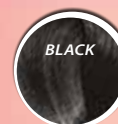
6 Sprays of 75 mL



# HAIR TOUCH-UP

*Quick dry & easy-to-use!*

**6 SHADES AVAILABLE TO MATCH WITH ALL HAIR COLORS**



- ✓ FORMULATION WITH PURE PIGMENTS & VEGETAL EXTRACTS
- ✓ OPTIMAL COVERAGE WITH NO DEMARCATION
- ✓ NATURAL FINISH THAT LET HAIR SOFT TO THE TOUCH
- ✓ ECONOMIC FORMAT : UP TO 25 APPLICATIONS



DISPLAY



LEAFLET



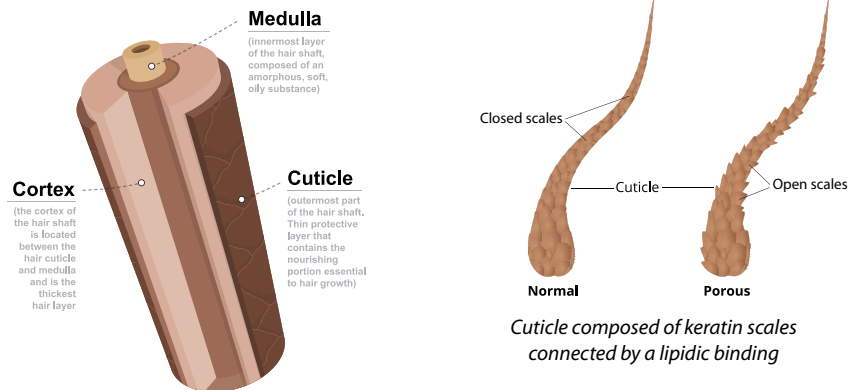


n°1 in FRANCE

# Color & Soin®

**NATURAL** ingredients for healthy & shiny hair!

## HOW HAIR IS COMPOSED?



## THE CAPILLARY STEM IS DAMAGED BY



**A thermal alteration** (hair dryer)



**A mechanical alteration** (brushing)



**A chemical alteration via hair dye:** keratin degradation due to a higher pH

- Dry, broken, and dull hair
- Damage on scalp
- Greasy hair
- Skin allergies



Damaged hair by the classic hair dye

\*IIMS Data 2016 in pharmacies



n°1 in FRANCE

# Color & Soin®

**1 PRODUCT, 2 ACTIONS**

**1**

**AN EXCLUSIVE HAIR DYE FORMULATION:  
NON-AGGRESSIVE, NON-IRRITATING<sup>1</sup>**

**0%  
AMMONIA  
PARABEN  
RESORCINOL  
SILICONE  
SLS**  
(Sodium Laureth Sulfate)

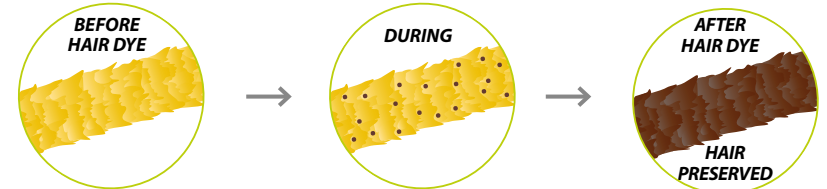


**Natural ingredients from plants extracts**



**Low molecular weight pigments**

They penetrate more easily, opening less the scales, and preserving hair



→ **pH (8,5) < 10\*** : preserve the hair structure

Integrity of keratin protected by oleic extract

→ **Neutralisation of aggressive compounds**

By the action of the protein complex

→ **Hypoallergenic, dermatologically tested**

<sup>\*</sup>pH hypoallergenic, dermatologically tested



\*IIMS Data 2016 in pharmacies



# Color & Soin®

n°1 in FRANCE

## 1 PRODUCT, 2 ACTIONS

### 2 DERMATOLOGICAL & REPAIRING HAIR BALM



Recommended by  
• DERMATOLOGISTS  
• PHARMACISTS  
• ANTI-CANCER CENTERS

#### CLINICAL TRIAL<sup>2</sup>

##### → Revitalisation of the cuticle

High molecular weight hydrolyzed protein improves the adhesion of scales on the cuticle, reduce its permeability and improves hydration.

##### → Cortex regeneration

Low molecular weight hydrolyzed protein penetrates the hair and repairs keratin

##### → Deep nutrition of hair

Quaternary salts form a protective layer on the hair

##### → Extra Moisturizing Hair

Hydrophilic low molecular weight compounds moisturize deeply

→ Soft hair,  
Rehydrated,  
Without damage



#### HIGH CUSTOMER SATISFACTION<sup>2</sup>

- Long-lasting and intense color, covers **100% of white hair**
- Volume, shine & silkiness for **83 %!**
- Caring for hair and scalp for more than **80 %!**

<sup>1</sup> Color&Soin recommended by the medical profession: School of Cosmetics and Health Care of Poland, 2015 / Doctor Pytkowska - Doctor and Engineer in Cosmetology, 2015 / Pr Maciej Krzakowski - National Consultant In Clinical Oncology, 2010

<sup>2</sup> Health and Beauty of hair clinically proven: Clinical study conducted by an independent laboratory: Evic Hispania Laboratory, 2010.

\*IIMS Data 2016 in pharmacies



# Color & Soin®

n°1 in FRANCE

## A COMPLETE RANGE



• Let it act for 20 to 30 minutes



• Permanent hair dye that cares and beautifies hair & scalp

• Quick & easy to use

### + 34 SHADES - FOR EVERYONE



> COLOR CHART



\*IIMS Data 2016 in pharmacies





# Color & Soin®

ASK FOR **EFFECTIVE** MARKETING TOOLS

n°1 in FRANCE

FLOOR DISPLAY  
WITH COLOR CHART  
INTEGRATED



ROLL UP  
90 x 200 mm



DIPTYCH PANEL  
1520 x 1020 mm



COUNTER DISPLAY



COLOR CHART



LEAFLET



DIMENSIONS  
360 (L) x 180 (P) x 1370 (H) mm

SHELF  
TALKER



DIMENSIONS :  
360 (L) x 180 (P) x 330 (H) mm

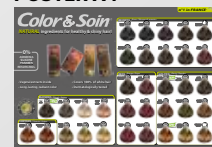
WINDOWS STICKER



POSTER A3



POSTER A4



SEPARATING KIT



SCALE



All these tools are available in open files

\*I/M/S Data 2016 in pharmacies

# Color & Soin®

A BRAND REPRESENTED IN **MORE THAN 57 COUNTRIES**

n°1 in FRANCE

ARABIC Countries



GERMANY



RUSSIA



\* All these tools are available in open files

\*I/M/S Data 2016 in pharmacies



# Color & Soin<sup>®</sup>

## ADVANCED



## A NEW RANGE

### MORE THAN A SIMPLE HAIR DYE: A GENUINE CARE

-  **RICH IN PURE PIGMENTS**
-  **FULL OF VEGETAL EXTRACTS:**
  - Argan Oil
  - Shea Butter
  - Flaxseed
-  **PERFECTLY ADAPTED FOR SENSITIVE SCALP AND DAMAGED HAIR**

**0%** Ammonia  
Resorcinol  
Silicone  
SLS  
Paraben  
Synthetic  
Fragrance  
PPD (para-phenylenediamine)

# Color & Soin<sup>®</sup>

## ADVANCED

## A KIT CONTAINS

- 1 A COLOURING CREAM WITH VEGETAL EXTRACTS
- 2 A COLOUR DEVELOPER
- 3 A FIXATIVE SHAMPOO
- 4 A REGENERATIVE HAIR MASK

Informations  
leaflet  
and gloves




### PHARMACEUTICAL QUALITY:

+ STABILITY, PRESERVES SCALP, REDUCES ALLERGY RISKS

# Color & Soin<sup>®</sup> ADVANCED

## 6 INCREDIBLE SHADES



# Color & Soin<sup>®</sup> ADVANCED

## UNEQUALLED RESULTS!

- ✓ A **natural** and **bright color**, which is long-lasting and doesn't change
- ✓ **Perfect coverage** of grey hair
- ✓ **Nourished, moisturized** and **reinforced hair**, healthier
- ✓ **Detangling** is facilitated, no breakage
- ✓ A **protected** and **moisturized scalp**

### CLINICAL STUDY\*:

#### COLOUR QUALITY

- The colour is intense 96%
- The color is long-lasting 88%
- Hair is shiny and bright 88%

#### HAIR CARE

- Restores hair vitality 92%
- Hair is nourished 90%
- Brings volume 89%
- Hair looks healthy 92%
- Hair is moisturized 91%

#### CUTANEOUS TOLERANCE

- Takes care of scalp 90%
- Moisturizes scalp 91%

### MESURES

No sebum variation on scalp

TEST CONCLUSION: VERY HIGH CUTANEOUS TOLERANCE

- **92% of testers** ENJOYED COLOR & SOIN ADVANCED
- **71%** WOULD SWITCH their hair dye for ADVANCED

\*Panel of 24 volunteers including 19 persons with grey hair.







## Brittle hair and nails

### A LOT OF FACTORS CAN AFFECT HAIR AND NAILS :

- ➔ SEASON CHANGE
- ➔ FATIGUE
- ➔ STRESS
- ➔ HORMONAL DISREGULATION
- ➔ VITAMINS DEFICIENCIES
- ➔ IMBALANCED FOOD

## HAIR LOSS, FRAGILE HAIR, BROKEN NAILS

*Women experienced such a problem once in their lives.  
It can be easily solved with a natural solution.*

## 4 ACTIONS TO GET BEAUTIFUL HAIR AND NAILS

### 1 BEAUTIFIES HAIR

*Keratin synthesis  
Moisturizing, softening*

### 2 DECREASES HAIR LOSS

*Stimulates hair growth  
Anti-stress*

### 3 STRENGTHENS NAILS

*Remineralisation  
Antioxidant*

### 4 PROTECTS SCALP

*Reduces dandruff  
Regulates sebum*

**1 MONTH  
PROGRAMME**



### TO HAVE BEAUTIFUL HAIR :

- ➔ CHOOSE PRODUCTS FOR YOUR HAIR TYPE
- ➔ SHAMPOO 2 TO 4 TIMES A WEEK
- ➔ MASSAGE YOUR SCALP OFTEN
- ➔ AVOID USING HOT WATER TO WASH YOUR HAIR
- ➔ GET HAIRCUT EVERY 6 TO 8 WEEKS

- ✓ HAIR AND NAILS HEALTH
- ✓ SCALP PROTECTION
- ✓ ANTI-DANDRUFF
- ✓ STOPS HAIR LOSS
- ✓ VOLUME AND SHINE



| DISPLAY

### PER 1 TABLET

- L-METHIONINE .....	123 MG
- ZINC .....	10 MG / 100% RI*
- MAGNESIUM .....	56,7 MG / 15% RI*
- VITAMIN C .....	80 MG / 100% RI*
- VITAMIN B3 .....	16 MG / 100% RI*
- VITAMIN B5 .....	6 MG / 100% RI*
- VITAMIN B8 .....	50 µG / 100% RI*
- HOPS EXTRACT .....	50 MG
- BAMBOO TABASHIR .....	27 MG
INCLUDING SILICA .....	20 MG

\*RI : Reference Intakes







## Grey hair

- ➔ THEY CAN APPEAR WITH AGE, STRESS, FATIGUE OR IN CASE OF AN EMOTIONAL SHOCK.
- ➔ MELANIN IS THE PIGMENT RESPONSIBLE FOR HAIR COLOR.
- ➔ WHEN CATALASE DECREASES, HYDROGEN PEROXIDE ACCUMULATES, DESTROYING MELANIN AND HAIR COLOR.
- ➔ MELANIN ALSO DECREASES WHEN MELANOCYTES ACTIVITY IS LOW.

# GREY AND WHITE HAIR

Innovating discovery : it is possible to self produce melanin thanks to an oral treatment.

## GET YOUR FORMER HAIR COLOR BACK

- 1 REVIVES ORIGINAL HAIR COLOR**
- 2 ANTIOXIDANT, PROTECTS HAIR**
- 3 STIMULATES HAIR GROWTH**
- 4 PREVENTS GREY HAIR APPARITION**

**EXCLUSIVE DISCOVERY**

**Catalas5-Zn™ +**  
**BIAMINOEE™**



| Box of 30 caps



## PREVENTION :

- ➔ QUIT SMOKING
- ➔ FOLLOW AN HEALTHY DIET
- ➔ PRACTICE RELAXING ACTIVITIES
- ➔ GET ENOUGH SLEEP
- ➔ MASSAGE YOUR SCALP EVERY DAY

- ✓ FIRST ORAL TREATMENT
- ✓ WORLDWIDE EXCLUSIVITY
- ✓ FOR ALL HAIR TYPE
- ✓ NO SIDE EFFECT
- ✓ NO CONTRAINDICATION



| DISPLAY

## INTAKES FOR 1 CAPSULE

- L-TYROSINE	200 mg	- Proline	0,32 mg
- COENZYME Q10	100 mg	- Threonine	0,29 mg
- TAURINE	50 mg	- Tryptophane	0,14 mg
- SPIKENARD EXTRACT (4:1)	12,5 mg	- Methionine	0,08 mg
- BLACKCURRANT LEAF EXTRACT (5:1)	10 mg	- Cysteine	0,07 mg
- BIAMINOEE™	10 mg	- Isoleucine	0,04 mg
- Leucine	1,25 mg	- Iron	0,02 mg
- Asparagin-aaspartic acid	1,09 mg	- Carnitine	0,048 µg
- Valine	0,80 mg	- Ornithine	0,004 µg
- Lysine	0,79 mg	- CATALASS-ZN™ : CATALASE	10 000 UI
- Alanine	0,76 mg	- ZINC	10 mg / 100 % RI*
- Glutamin-glutamic acid	0,75 mg	- COPPER	1 mg / 100 % RI*
- Histidine	0,69 mg	- BETA-CAROTENE	1,2 mg
- Phénylalanine	0,64 mg	- SELENIUM	10 µg / 18% RI*
- Glycine	0,45 mg	- VITAMIN B8	50 µg / 100 % RI*
- Serine	0,42 mg		
- Arginine	0,37 mg		

\*RI : Reference Intakes

