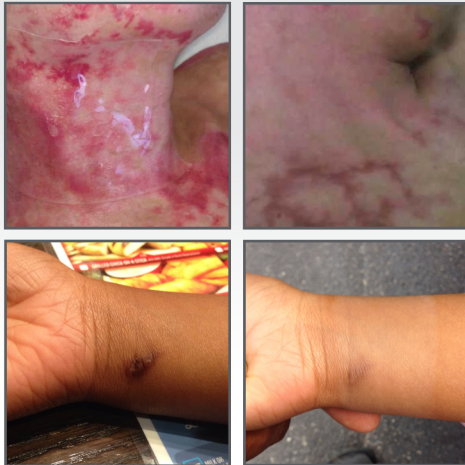




Rejûvaskin®  
A SKIN HEALTH COMPANY

# Proven Effective

## Scar Fx® Silicone Sheeting



## RejûvaSil® Silicone Scar Gel



## Scar Esthetique® Scar Crème



At Rejûvaskin, it's really always been about healthy skin. We started in scar management around 30 years ago. Four million scars and 60 countries later, we know that healthy skin is a lot bigger. Now, each product we create brings the opportunity for healthy, happy, and confident skin. Because healthy skin is always in.

# Rejûvaskin®

A SKIN HEALTH COMPANY



## Address

13191 Starkey Road, Bldg 11  
Largo, FL 33773-1438

## Contact

Office: +1 727-535-0022  
Toll-free: +1 888-SCARHEA(L)  
Fax: +1 727-535-0055  
info@scarheal.com



[www.rejuvaskin.com](http://www.rejuvaskin.com)

MADE IN USA

30 Years  
60 Countries  
4 Million Scars

## Why choose the Scar Heal® product line?

According to the International Advisory Panel on Scar Management, silicone is the gold standard in non-invasive scar treatment. Silicone occlusion enhances the skin's own natural healing process to reduce collagen production and help minimize the appearance of problem scarring.

Our Scar Heal® product line is made up of three silicone-based products proven to help manage the appearance of even the most difficult scars. For over 30 years, these products have been recommended by physicians in over 60 countries.



### RejûvaSil® Silicone Scar Gel

- 97% Liquid Silicone
- Softens and Flattens Raised Scars
- Reduces Redness and Discoloration
- Relieves Itchiness and Discomfort
- Suitable for Children and Facial Scars



### Scar Fx® Silicone Sheetting

- Softens and Flattens Raised Scars
- 100% Healthcare Grade Silicone
- Soft, Pliable, and Contours Easily to the Body
- Self-adhering Sheets in 13 Sizes (4 Specific to the Breast)
- Can be Washed and Reused for 30-45 days



### Scar Esthetique® Scar Crème

- 23 Effective Ingredients including Silicone
- Targets Discoloration on the Cellular Level
- Easily Absorbed and Non-greasy
- Recommended for Long-term Scar Management
- Polypeptides, Anti-oxidants, and All-natural Botanicals

“

We have strongly recommended Scar Heal products for our plastic surgery patients for the past 5 years. With optimal surgical techniques along with Scar Heal products we are able to obtain the best results possible. They are user friendly and are an affordable, reliable and safe treatment.”

– Dr. David Halpern, MD

## Physician Recommended Scar Management System



### Scar Fx at Night

At night place Scar Fx over your clean and dry scar for 8-12 hours. The occlusive barrier provided by the silicone sheet helps create the ideal healing environment for your scar.



### RejûvaSil During the Day

During the day apply RejûvaSil 2-3 times to help maintain the healing environment. RejûvaSil also helps relieve itchiness and discomfort associated with scars.



### Scar Esthetique for Discoloration

Once your scar is flat and smooth, apply Scar Esthetique 3-4 times daily to target remaining discoloration. Many patients see continued results through longterm use of Scar Esthetique.




Products also Available in 25 Surgery-specific Scar Heal® Kits



## Scar Fx Sizes

Our Scar Fx Silicone Sheeting comes in 13 unique sizes to best fit your scar management needs. There are 9 rectangular sheets and 4 sheets specific to the breast. Our silicone sheets can be cut to any size by the end user. All sheeting is sold individually, unless it is purchased as part of a Scar Heal® Kit. Breast sizes are sold as pairs in each kit.

RECTANGULAR SIZES	CODE	POTENTIAL APPLICATION
1.5x3" (3.75x7.5cm)	11503	Small scars, Mohs surgery, trocar sites
1.5x5" (3.75x12.5cm)	11505	Small scars, Mohs surgery, trocar sites
1.5x9" (3.75x22.5cm)	11509	C-Sections, Abdominal surgery
1x12" (2.5x30cm)	10112	C-Sections, Abdominal surgery
1x22" (2.5x55cm)	10122	Abdominoplasty, Bariatric surgery
3x5" (7.5x12.5cm)	10305	Burns, Traumatic Scars, Breast Procedure
4x8" (10x20cm)	10408	Burns, Traumatic Scars
10x12" (25.4x30.5cm)	11012	Burns, Traumatic Scars
6x48" (15x122cm)	10648	Velcro Belt with Silicone

BREAST SIZES	CODE	POTENTIAL APPLICATION	IMAGE
3" Breast Circle	10000	Mastopexy	
Breast Piece	11234	Augmentation	
Lollipop Breast Piece	13456	Mastopexy or Reconstruction	
Breast Anchor	15678	Augmentation or Reduction	